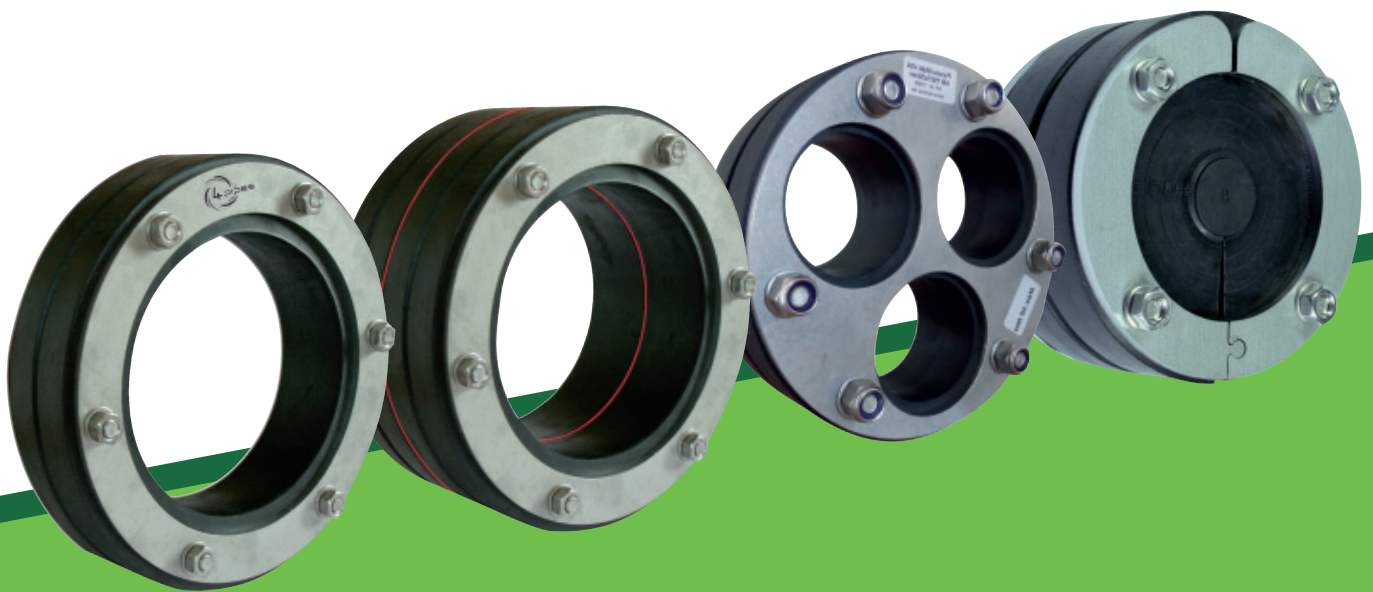


## Pipeline Accessories



# MF-RÖRTÄTNING

MF-RÖRTÄTNING

Rörtätning Standard



The high performance pipeline wall penetration seal



Product information

Pressio-Rings Seals work as high quality seals against pressing and non-pressing water in wall penetrations of pipes and cables.

Pressio Seals are the most secure type for sealing wall penetrations for pipelines. This seal is basically tight against pressing water with pressure plates made of V2A stainless steel and extra soft rubber.

Usage

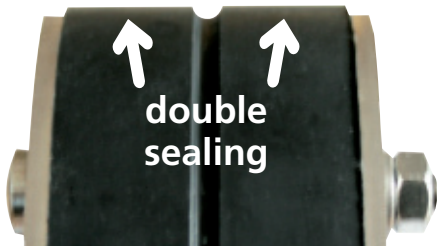
Gas and water tight closure between carrier- and casing pipe or core hole with a 40mm thick rubber element (alternatively with two 40 mm rubber elements) which is compressed between 2 steel discs.

Approval and test

- Pressure tight up to 5,0 bar\*
  - drinking water approved version on request
- \*from 3 bar on sealing has to be held against movement

Advantages

- fast mounting
- can be produced individually according to customer requirements
- usable at various building and plant applications
- pressure plates are made of stainless steel
- against pressing and non-pressing water
- Special elastomers like e.g. portable water EPDM or Nitrile for gas and oil resistance possible



Installation

1. Clean casing pipe/core bore and pipe.
2. Check casing pipe/core bore diameter and medium pipe diameter with the data on the sealing kit.
3. Insert Pressio Seal into the wall and push pipe through. Mount sealing kit on the outside of the building with direction of nuts inside to enable later retightening.
4. Use a torque wrench to tighten acc. to the next table

Advice:

- Core bore should be coated with epoxy to protect the concrete and smoothen any possible cavities/grooves
- For a retrofit mounting a split Pressio Seal is available
- Pipes have to be centered and supported

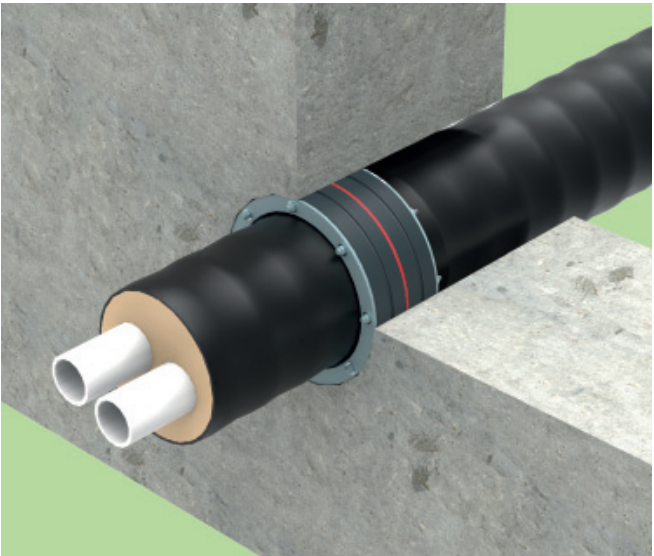
Max. torque tightening in Nm		
Srew diameter	Standard pipes	For thin walled plastic pipes
M 6	5 Nm	5 Nm
M 8	10 Nm for Pressio Standard, Standard split version and Standard Type FW	8 Nm for Pressio Standard, Standard split version and Standard Type FW
	20 Nm for Pressio Individual	15 Nm for Pressio Individual
M 10	30 Nm	22 Nm
M 12	36 Nm	26 Nm

MF-RÖRTÄTNING

Rörtätning för Fjärrvärme



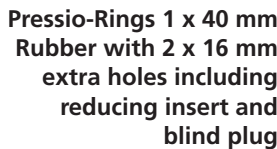
Preinsulated Pipe Wall Penetration Seal 2x40 mm  
Special design for district heating and -cooling pipes



Product information

Pressio-Rings FW-Wall Penetration Seals are engineered for flexible and PE-jacket preinsulated pipe systems.

- Available in special preinsulated pipe dimensions
- In 2x40 mm and 1x40 mm version
- Extra soft rubber allows **low tightening torque** with low danger of pipe deformation
- Special dimensions consider the pipetolerances of the EN253 and e.g. the ovalities of flexible pipes
- MFPA certified up to 5 bar pressure
- Individual dimensions possible
- Allows bottle pipe movement and angling






Installation

1. Clean casing pipe/core bore and pipe.
2. Check casing pipe/core bore diameter and pipe diameter with the data on the sealing kit.
3. Insert Pressio Seal into the wall and push pipe through. Mount sealing kit on the outside of the building with direction of nuts inside to enable later retightening.
4. Use a torque wrench to tighten acc. to the next table

Advice:




- Core hole should be coated with epoxy to protect the concrete and smoothen any possible cavities/grooves
- For a delayed mounting a split Pressio Seal is available
- Medium pipes have to be centered and supported

Max. torque tightening in Nm		
Srew diameter	Standard pipes	For thin walled plastic pipes
M 6	5 Nm	5 Nm
M 8	10 Nm for Pressio Standard, Standard split version and Standard Type FW	8 Nm for Pressio Standard, Standard split version and Standard Type FW
	20 Nm for Pressio Individual	15 Nm for Pressio Individual
M 10	30 Nm	22 Nm
M 12	36 Nm	26 Nm



Pressio Seals are made against pressing water					
Standard dimensions		Standard	Split Version	District heating	
					
Core hole/ wallsleeve	Carrier pipe OD in mm		Stainless steel pressure plates bolts V2A Rubber size 1 x 40 mm Rubber: EPDM	Stainless steel pressure plates, <i>split</i> Version, bolts V2A Rubber size 1 x 40 mm Rubber: EPDM	Stainless steel pressure plates bolts V2A <i>Rubber size 2x40 mm</i> Rubber: EPDM
mm	min.	max.	Art.-No.	Art.-No.	Art.-No.
50	6	12	10500	10600	*
70	10	22	10505	10605	*
70	24	32	10506	10606	*
70	32	41	10507	10607	*
80	20	28	10510	10610	*
80	28	32	10514	10614	*
80	32	40	10511	10611	*
80	40	50	10512	*	
100	15	22	10515	10615	*
100	20	28	10516	10616	*
100	25	32	10517	10617	*
100	32	40	10518	10618	*
100	36	44	10519	10619	*
100	41	51	10489	*	*
100	46	56	10520	10620	*
100	55	65	10521	10621	*
125	35	40	10523	10623	
125	45	50	10524	10624	
125	55	64	10525	10625	*
125	61	70	10526	10626	10700
125	70	78	10527	10627	10701
150	35	40	10529	10629	*
150	46	54	10530	10630	*
150	56	66	10531	10631	10704
150	69	78	10532	10632	10705
150	79	91	10533	10633	10708
150	85	94	10534	10634	10706
150	90	97	10536	*	*
150	98	110	10535	10635	10707
187**	88	103	01564	01664	10764
187**	108	115	01565	01665	10765
187**	119	128	01566	01666	10766
187**	135	144	01567	01667	10767
200	88	103	10540	10640	10709
200	108	115	10541	10641	10710
200	116	126	10542	10642	10713
200	119	128	10543	10643	10711
200	125	135	10547	*	10760
200	132	141	10544	10644	*
200	135	144	10545	10645	10712
200	140	150	10548	*	10761
200	150	160	10546	10646	10714

\*Available on request / Pressio Individual special version up to DN 3000 on request




\*\*made for KG/KG2000 casing pipes

Pressio Seals are made against pressing water					
Standard dimensions		Standard	Split Version	District heating	
					
Core hole/ wallsleeve	Carrier pipe OD in mm		Stainless steel pressure plates Bolts V2A Rubber size 1 x 40 mm Rubber: EPDM	Stainless steel pressure plates, <i>split</i> Version, bolts V2A Rubber size 1 x 40 mm Rubber: EPDM	Stainless steel pressure plates bolts V2A <i>Rubber size 2x40 mm</i> Rubber: EPDM
mm	min.	max.	Art.-No.	Art.-No.	Art.-No.
250	135	144	10550	10650	10715
250	140	149	10551	10651	10716
250	150	159	10552	10652	10717
250	156	165	10553	10653	10718
250	165	175	10554	10654	10721
250	174	181	10555	10655	10719
250	178	187	10556	10656	10720
250	197	202	10557	10657	10722
250	204	210	10558	10658	*
300	178	187	10565	10665	10725
300	193	204	10566	10666	10726
300	198	207	10567	10667	10727
300	218	226	10568	10668	10728
300	224	233	10564	10664	10724
300	242	251	10569	10669	*
350	224	233	10570	10670	10730
350	233	243	10574	10674	10759
350	249	258	10571	10671	10731
350	270	282	10572	10672	*
350	279	288	10573	10673	10733
400	270	280	10575	10675	*
400	279	288	10576	10676	10735
400	304	313	10577	10677	10736
400	314	323	10578	10678	10737
400	320	330	10579	10679	10738
500	354	364	01582	01682	10750
500	392	402	01583	01683	*
500	400	412	01584	01684	10751
500	421	431	01585	01685	*
600	450	464	01588	01688	10755
600	494	504	01589	01689	*
600	500	515	01590	01690	10756
600	524	534	01591	01691	*

\*Available on request/ Pressio Individual special version up to DN 3000 on request




Sealing range cable outlet 6 - 10 mm with insert 10 - 16 mm without insert			Pressio-Rings with 2 x 16 mm extra outlet incl. insert and blind plug Rubber width 1 x 40 mm Rubber: EPDM		Pressio-Rings with 2 x 16 mm extra outlet incl. insert and blind plug Rubber width 2 x 40 mm Rubber: EPDM	
OD	Medium pipe		Art.-No.	Art.-No.		
mm	min.	max.				
150	69	78	01500	01700		
150	85	94	01501	01701		
200	108	115	01502	01702		
200	119	128	01503	01703		
200	135	144	01504	01704		
250	156	165	01505	01705		
250	178	187	01506	01706		
300	193	204	01507	01707		
300	224	233	01508	01708		



Pressio Seals are made against pressing water					
Standard dimensions			V4A / 1.4571	Drinking water	Blind
					
Core hole/ wallsleeve	Carrier pipe OD in mm		Stainless steel pressure plates and bolts V4A rubber: EPDM	Stainless steel pressure plates and bolts V2A, rubber: EPDM with KTW/W 270 approval**	Blind stainless steel pressure plates, bolts V2A rubber: EPDM
mm	min.	max.	Art.-No.	Art.-No.	Art.-No.
50	6	12	10300	10800	10585
70	10	22	10305	10805	10586
70	24	32	10306	10806	
70	32	41	10307	10807	
80	20	28	10310	10810	10587
80	32	40	10311	10811	
100	15	22	10315	10815	10596
100	20	28	10316	10816	
100	25	32	10317	10817	
100	32	40	10318	10818	
100	36	44	10319	10819	
100	46	56	10320	10820	
100	55	65	10321	10821	
125	55	64	10325	10825	10597
125	61	70	10326	10826	
125	70	78	10327	10827	
150	46	54	10330	10830	10598
150	56	66	10331	10831	
150	69	78	10332	10832	
150	79	91	10333	10833	
150	85	94	10334	10834	
150	98	110	10335	10835	
200	88	103	10340	10840	10591
200	108	115	10341	10841	
200	116	126	10342	10842	
200	119	128	10343	10843	
200	125	135	*	*	
200	132	141	10344	10844	
200	135	144	10345	10845	
200	140	150	*	*	
200	150	160	10346	10846	
250	135	144	10350	10850	10592
250	140	149	10351	10851	
250	150	159	10352	10852	
250	156	165	10353	10853	
250	165	175	10354	10854	
250	174	181	10355	10855	
250	178	187	10356	10856	
250	197	202	10357	10857	
250	204	210	10358	10858	



\*Available on request / Pressio individual special version up to DN 3000 on request  
Rubber quality: NBR and KTW/W270 for Pressio seal with split version on request

\*\* according to DVGW W270, Elastomer Guideline of UBA / KTW  
**Attention: No stock item**

Pressio Seals are made against pressing water					
Standard dimensions			V4A / 1.4571	Drinking water	Blind
					
Core hole/ wallsleeve	Carrier pipe OD in mm		Stainless steel pressure plates and bolts V4A rubber: EPDM	Stainless steel pressure plates and bolts V2A, rubber: EPDM with KTW/W 270 approval**	Blind stainless steel pressure plates, bolts V2A rubber: EPDM
mm	min.	max.	Art.-No.	Art.-No.	Art.-No.
300	178	187	10365	10865	10593
300	193	204	10366	10866	
300	198	207	10367	10867	
300	218	226	10368	10868	
350	224	233	10370	10870	10594
350	249	258	10371	10871	
350	270	282	10372	10872	
400	270	280	10375	10875	10595
400	279	288	10376	10876	
400	304	313	10377	10877	
400	314	323	10378	10878	
400	320	330	10379	10879	
500	354	364	01382	10882	*
500	392	402	01383	10883	
500	400	412	01384	10884	
500	421	431	01385	10885	*
600	450	464	01388	10888	
600	494	504	01389	10889	
600	500	515	01390	10890	
600	524	534	01391	10891	

\*Available on request / Pressio individual special version up to DN 3000 on request  
Rubber quality: NBR and KTW/W270 for Pressio seal with split version on request

\*\* according to DVGW W270, Elastomer Guideline of UBA / KTW  
**Attention: No stock item**

Pressio Multi Seal	ID core drilled hole or wall sleeve in mm	Carrier pipe OD in mm	Art.-No.
 closed	150	3 x 50	11080
 splited	150	3 x 50	11081

# MF-RÖRTÄTNING

Rörtätning Multi



## Your custom made Pressio Wall Penetration Seal



### Product information

Pressio Individual Seals are engineered and custom made at 4 pipes to solve individual problems on site.

### Production possibilities

- Multiple seals
- Oval/square outside
- Not centered
- Split or closed possible
- Dimensions up to DN 3000 possible
- Standard elastomer EPDM
- Special elastomers available (NBR, Viton, Silicone etc.) for e.g.
  - high temperatures
  - Chemicals
  - Oils/natural gas
  - portable water etc.
- Width 1x40 mm or 2x40 mm
- Pressure plates in various stainless steel qualities available
- For production and best function, we need your best input. Please use the template next page to consider all details

### Attention delivery time !

Express production possible against a premium

The 4 pipes warranty is limited to the replacement of faulty material. The usability of the product for the individual application is fully under the user's responsibility.

### Installation

1. Clean casing pipe/core bore and pipe.
2. Check casing pipe/core bore diameter and medium pipe diameter with the data on the sealing kit.
3. Insert Pressio Seal into the wall and lead medium pipe through. Mount sealing kit on the outside of the building with direction of nuts inside to enable later retightening.
4. Use a torque wrench to tighten acc. to the next table

### Advice:

- Core hole should be coated with epoxy to protect the concrete and smoothen any possible cavities/grooves
- For a delayed mounting a split Pressio Seal is available
- Medium pipes have to be centered and supported

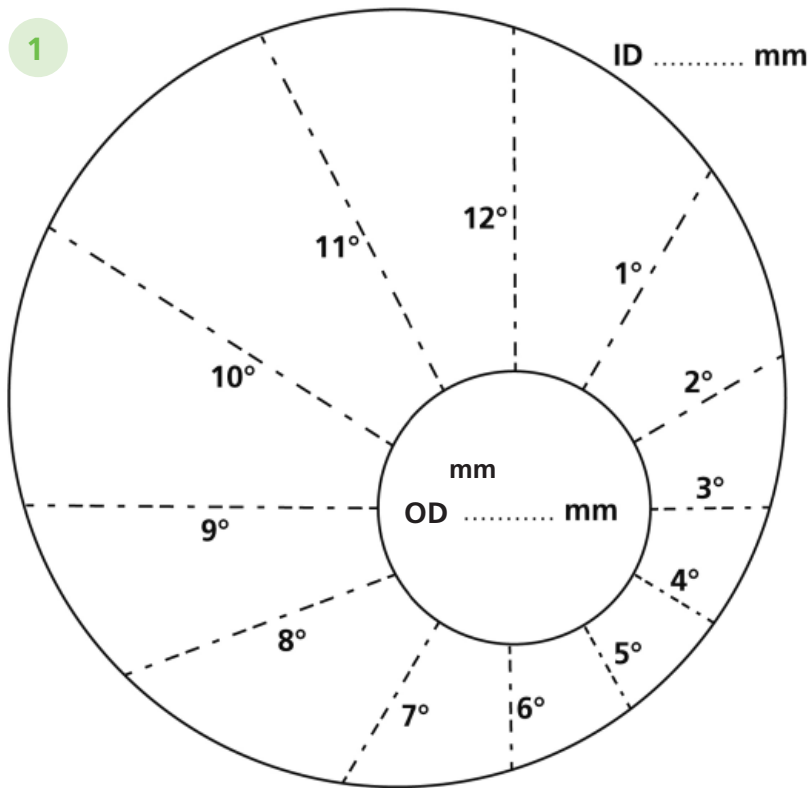
Max. torque tightening in Nm		
Srew diameter	Standard pipes	For thin walled plastic pipes
M 6	5 Nm	5 Nm
M 8	10 Nm for Pressio Standard, Standard split version and Standard Type FW	8 Nm for Pressio Standard, Standard split version and Standard Type FW
	20 Nm for Pressio Individual	15 Nm for Pressio Individual
M 10	30 Nm	22 Nm
M 12	36 Nm	26 Nm

# MF-RÖRTÄTNING

Rörtätning Multi



## Template-Example



### Guideline technical input:

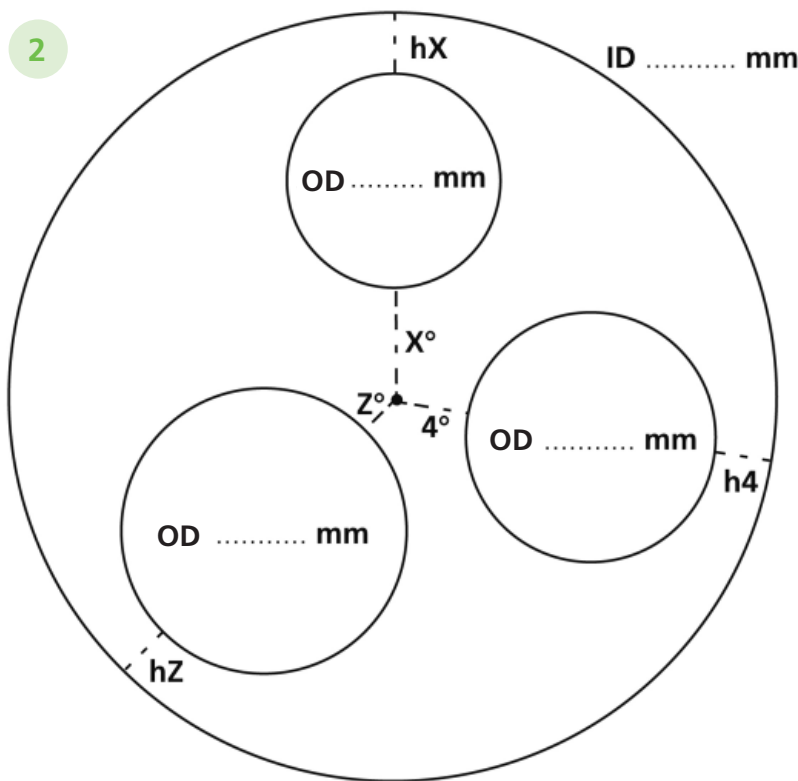
- Rubber
  - 1 x 40 mm
  - 2 x 40 mm
- Elastomer
  - EPDM
  - Nitrile
  - Viton
  - EPDM-KTW (drinking water)
  - Silicone

- Pressure plates
  - V2A
  - V4A / 1.4571
  - Steel spec.

- Dimension
  - split
  - closed
  - oversize flange

- Kind of pipe
- Tolerances
- Crane eyelet
- Handles

Please provide the original measured sizes, 4 pipes designs the later seal and cutting dimensions.





MF-RÖRTÄTNING

Wall Penetration Seals

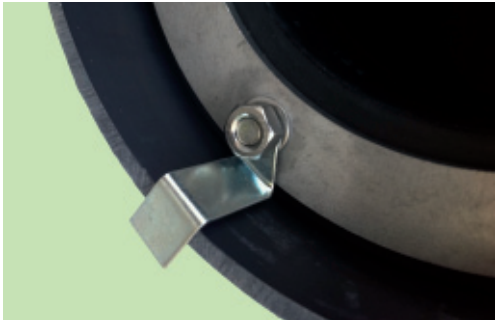


Character	Pressio Seal Standard EPDM	Pressio Seal for drinking water	Pressio Seal for preinsulated pipes	Pressio Individual
Core bore min/max	50 - 600 mm	50 - 2000 mm	125 - 600 mm	40 - 4000 mm
Material pressure plate	V2A	V2A V4A on request	V2A	Standard V2A, V4A / Epoxy coating on request
Rubber quality	EPDM	EPDM	EPDM	EPDM EPDM with KTW/W 270* NBR (Nitrile) Silicone
Temperature	-30°C up to +120°C	-30°C up to +120°C	-30°C up to +120°C	EPDM -30°C up to + 120°C NBR -30°C up to + 70°C Silicone -20°C bis + 200°C
Pressure rating	3,0 bar, held in place up to 5,0 bar	3,0 bar, held in place up to 5,0 bar	3,0 bar, held in place up to 5,0 bar	1,5 bar**
Rubber thickness***	40 mm	40 mm	80 mm	up to core hole 800 mm 1 x 40 mm rubber for core hole 800 mm and larger: 2 x 40 mm rubber
Rubber durometer, Shore A	45 ± 5	55 ± 5	45 ± 5	Standard EPDM, EPDM with KTW ELL/W 270 and NBR 50 ± 5 Silicone 50 ± 5
UV-resistance	good	good	good	EPDM good NBR bad

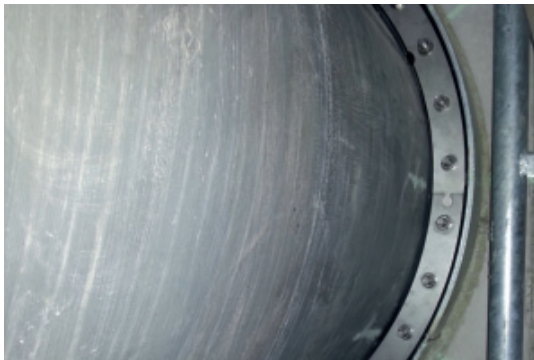
Values for pressure rating at 23°C. At higher temperatures is a holding fixture has to be mounted.  
\* EPDM-KTW rubber tested accord. KTW drinking water test and W270.  
\*\* For annular spaces >100 mm, the seal should be held in place by further accessories.  
\*\*\* Tolerance ± 1 mm



Further Pressio seal types are also available on request.



Holding fixture M6 and M8



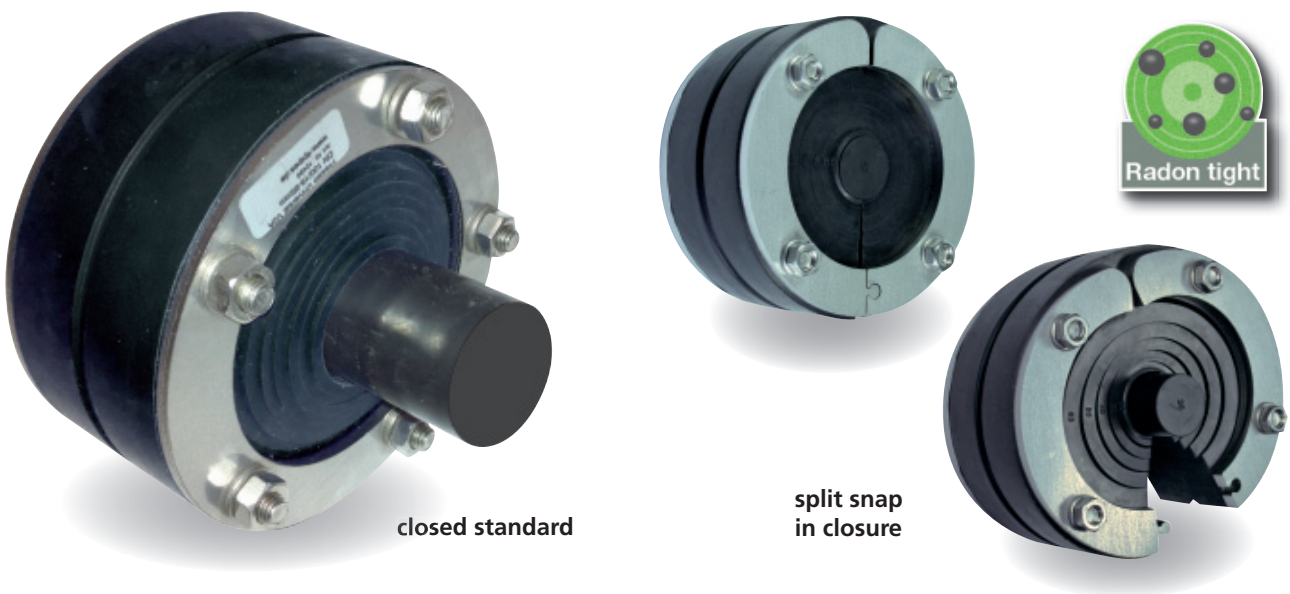
Pressio individual, split, potable water, non centric



Seal with  
fix-loose flange

MF-RÖRTÄTNING

Rörtätning Universal med Lökringar



Pressio Universal Seals can be used as a blind seal or single duct. Because of its soft rubber the Pressio Universal Seals are especially suitable for plastic pipes. The sealing range for the duct of a pipe/cable is stepped with rubber blades and therefore usable for various outside diameters.

- Advantages
- 3 seals for 80% of the popular pipe sizes
  - low stock holding
  - fast mounting
  - blade technic with large application range
  - split version with snap in closure

- Mounting advice
1. Count rings to be removed accord. to medium pipe diameter
  2. For cutting off the blades they have to be pressed by hand or screw driver to the back
  3. Cut into the remaining rubber 'skin' at the blade edge
  4. The blade can be drawn off by hand



Further Pressio Universal Seal types (e.g. with extra-large flange) are also available on request.

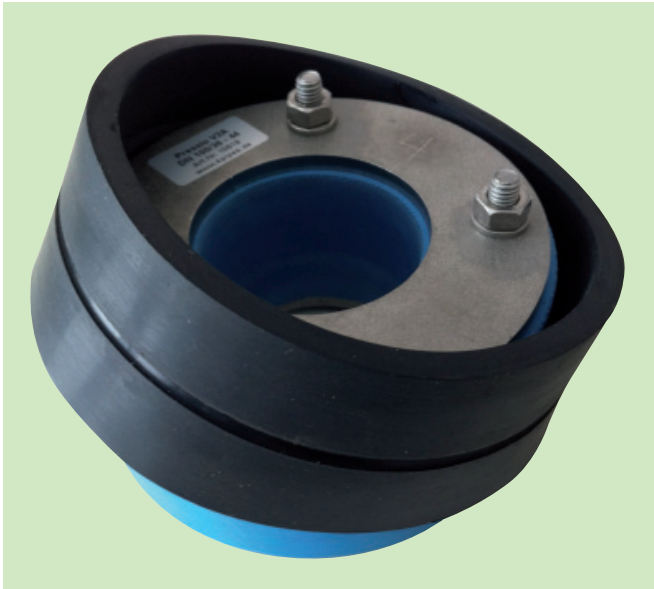
Technical data

	split Universal DN 100	Universal DN 100	Universal DN 150	Universal DN 200
Material pressure plate	V2A, split	V2A, closed	V2A, closed	
Pressure rating as blind closure	1,5 bar	1,5 bar	against non-pressing water	
Pressure rating with medium pipe	1,5 bar	1,5 bar	1,0 bar	
Rubber thickness*	40 mm	40 mm	40 mm	
Rubber quality	EPDM	EPDM	EPDM	
Temperature	-30°C up to +120°C	-30°C up to +120°C	-30°C up to +120°C	
Rubber grade, Shore A	45 ± 5	45 ± 5	45 ± 5	
For medium pipe OD	20, 25, 32, 40, 50, 63 mm	18 - 65 mm in 5 mm steps per ring	32, 40, 50 mm 60,3 - 63 mm 75 - 76,1 mm 88,9 - 90 mm, 110 mm	110 mm, 125mm, 139,7 - 140 mm 160 mm
Core bore hole	100 mm	100 mm	150 mm	200 mm
Art.-No.	10499	10490	10495	10493

\* Tolerance ± 1 mm  
The mentioned values refer to a pressure tightness rating at an operating temperature of 23°C. If the temperature is different, especially higher, a holding fixture has to be mounted.

# MF-RÖRTÄTNING

## Extension-Rings



### Product description:

Pressio Extension-Rings serve as an easy, save and cost effective feature to **extend and adopt existing standard Pressio-Wall-penetration seals 4 pipes to more exotic or uncommon wallsleeve or corehole diameters.**

The outside diameter of a standard seal is build up with the extension rings. An individually cut seal is not always necessary any more.

A cost effective stock keeping becomes possible also for not very common seal sizes.

Pressio Extension-Rings are made of high quality, extra soft Shore A 43 ±5 EPDM, similar to the Pressio 4pipes standard seals.

The **integrated groove and tongue** works acc. to the principles of a modular system, granting a save hold of the ring.

**The principle of the dubble sealing surface philosophy** is kept up with the Extension-Rings and its integrated groove. Pressio Wallpenetration Seals with applied Pressio Extension-Rings 4 pipes grant a resistance against water pressure up to 1,5 bar.

### The application

of the Pressio-Extension-Rings is very easy. The ring with a corresponding inner diameter is **just pulled over a standard Pressio seal. The groove and tongue system should snap in!** Afterwards the complete **seal is mounted like a standard Pressio seal according to the application manual.**

**Attention**, because of the groove and tongue system, the Extension-Rings are **only compatible to original Pressio-Wallpenetration Seals 4 pipes with ONE groove!**

For Pressio OD	Extension to	Description	Art. No.
70 mm	75-79 mm	Pressio - Extension 75 mm auf 59 mm	08020
80 mm	85 mm	Pressio - Extension 80 mm to 85 mm	08000
80 mm	90 mm	Pressio - Extension 80 mm to 90 mm	08001
80 mm	93 mm	Pressio - Extension 80 mm to 93 mm	08002
100 mm	103,6 mm	Pressio - Extension 100 mm to 103,6 mm	08010
100 mm	110 mm	Pressio - Extension 100 mm to 110 mm	08011
100 mm	118-120 mm	Pressio - Extension 100 mm to 118-120 mm	08012
150 mm	158-160 mm	Pressio - Extension 150 mm auf 158-160 mm	08030

You have regular applications for fairly non-standard core-drill-holes, wallsleeve IDs or pipe IDs in reasonable volumes!  
**Talk to us, we manufacture your extension ring for your application.**

