

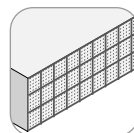
Tender / Order form Stremaform® construction joints with coated metal waterstop „Fradiflex®“ - slab

This order sheet has been designed to document your project requirements quickly and efficiently. Please send form to the below address and we will provide a quotation for your requirements:

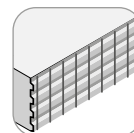
MAX FRANK Group
info@maxfrank.com

Project name:
Site address:
Site contact:
Tender
Order

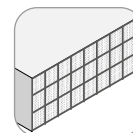
Design options surface



standard

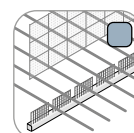
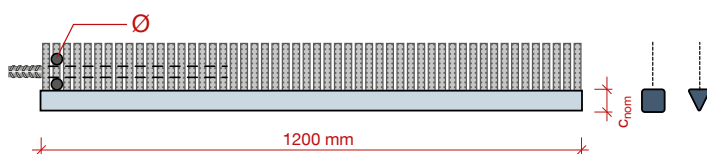


indented joint according to EC2

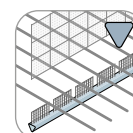


fine mesh for free flowing, self compacting concrete

Stremaform® spacer for efficient mounting

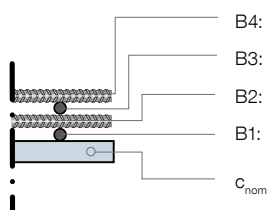


with Stremaform® spacer (square bar)



with Stremaform® spacer (triangular bar)

- joint length L: mm
- B4: 4th layer - Ø: mm
- B3: 3rd layer - Ø: mm
- B2: 2nd layer - Ø: mm
- B1: 1st layer - Ø: mm



length [mm]	C _{nom} [mm]	C _{nom} [mm]
1200	35	30
	40	35
	45	40
	50	50
	60	60
	75	

Layout and reinforcement situation (A or B)

slab thickness d mm

top:

top cover

C_{nom top} mm

- T1: 1st layer Ø mm
- T2: 2nd layer Ø mm
- T3: 3rd layer Ø mm
- T4: 4th layer Ø mm

A

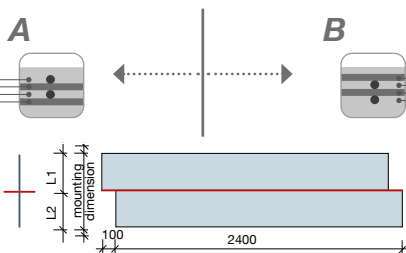
B

top:

top cover

C_{nom top} mm

- T1: 1st layer Ø mm
- T2: 2nd layer Ø mm
- T3: 3rd layer Ø mm
- T4: 4th layer Ø mm



mounting dimension EBM mm

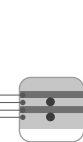
mounting dimension EBM mm

bottom:

- B4: 4th layer Ø mm
- B3: 3rd layer Ø mm
- B2: 2nd layer Ø mm
- B1: 1st layer Ø mm

bottom cover

C_{nom bottom} mm

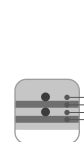


bottom:

- B4: 4th layer Ø mm
- B3: 3rd layer Ø mm
- B2: 2nd layer Ø mm
- B1: 1st layer Ø mm

bottom cover

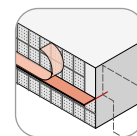
C_{nom bottom} mm



Stiffening

The design of the stiffening is selected by us according to the installation dimension. If you require an individual design, please note this below!

Tender/ Order form - Stremaform® construction joints coated metal waterstop „Fradiflex®“- slab

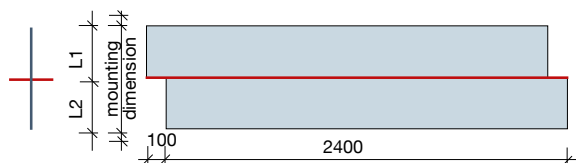


design level 1

design level 2

design level 3 - please send drawings

Position of the waterstop



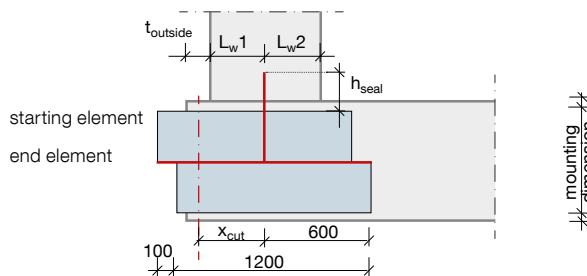
mounting dimension EBM: mm

waterstop in centre: yes no

top distance (L1) mm
bottom distance (L2) mm

Please mark up any height offsets!

Wall transition unit



wall dimensions

$t_{outside}$ mm
 L_{w1} mm
 L_{w2} mm

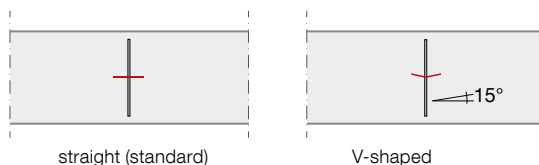
slab dimensions

x_{cut} mm
($L_w1 + t_{outside}$ - concrete cover)

Sealing overhang

h_{seal} 200 mm 300mm
(mounting dimension see above)

Metal waterstop



type of metal waterstops

standard 150/1,5 mm

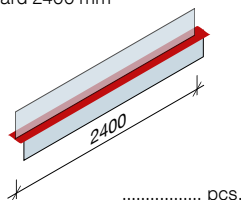
metal waterstop dimension
width/thickness =/..... mm

coating: one-sided double-sided (standard)

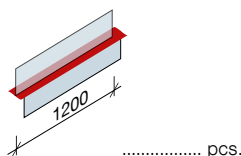
Units

available shapes (standard)

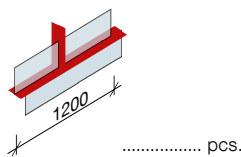
① Standard 2400 mm



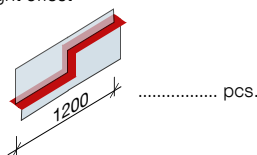
② Standard 1200 mm



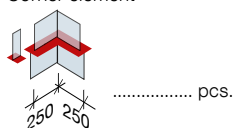
③ Wall transition unit



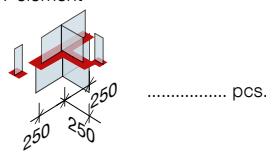
④ Height offset



⑤ Corner element



⑥ T-element



⑦ Crossing

