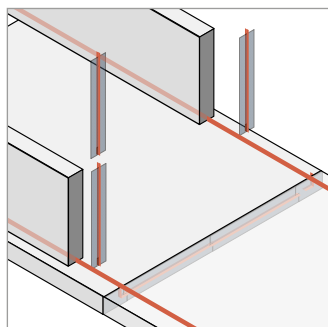


Tender / Order form - Stremaform® working joints wall



Formwork for concrete pours

This order sheet has been designed to document your project requirements quickly and efficiently. Please send form to the below address and we will provide a quotation for your requirements

MAX FRANK Group
info@maxfrank.com

Project name:
Site address:
Site contact:

Tender
Order

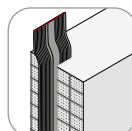
Waterproofing



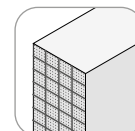
coated metal water stop



water stop with coating at the splice



carrying cage for rubber/PVC water stop



without waterproofing

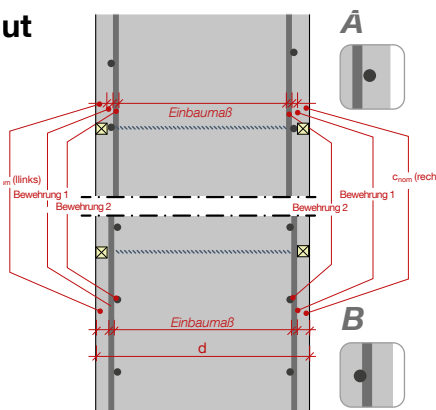
type of metal waterstops

- 150/1.5 mm
- 250/1.5 mm
- 250/2.0 mm
- 300/1.5 mm
- 300/2.0 mm
-/.....mm

type of of rubber/PVC waterstop

manufacturer
type

Layout



wall depth d mm

left:

left cover $C_{nom\ top}$ mm

1 \emptyset mm , number of layers n pc.
2 \emptyset mm , number of layers n pc.

mounting dimension EBM mm

1 \emptyset mm , number of layers n pc.
2 \emptyset mm , number of layers n pc.

right cover $C_{nom\ bottom}$ mm

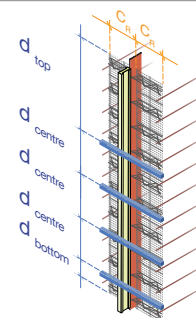
Mounting dimension - recommendations

for a maximum concreting pressure of 60 kN/m²

on-site brazing (standard)

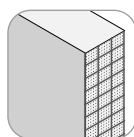


[Link to the installation guidelines.](#)

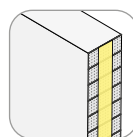


(Self-supporting design **without** on-site bracing on request)

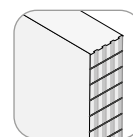
Design options



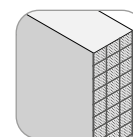
standard construction joint



crack inducing joint



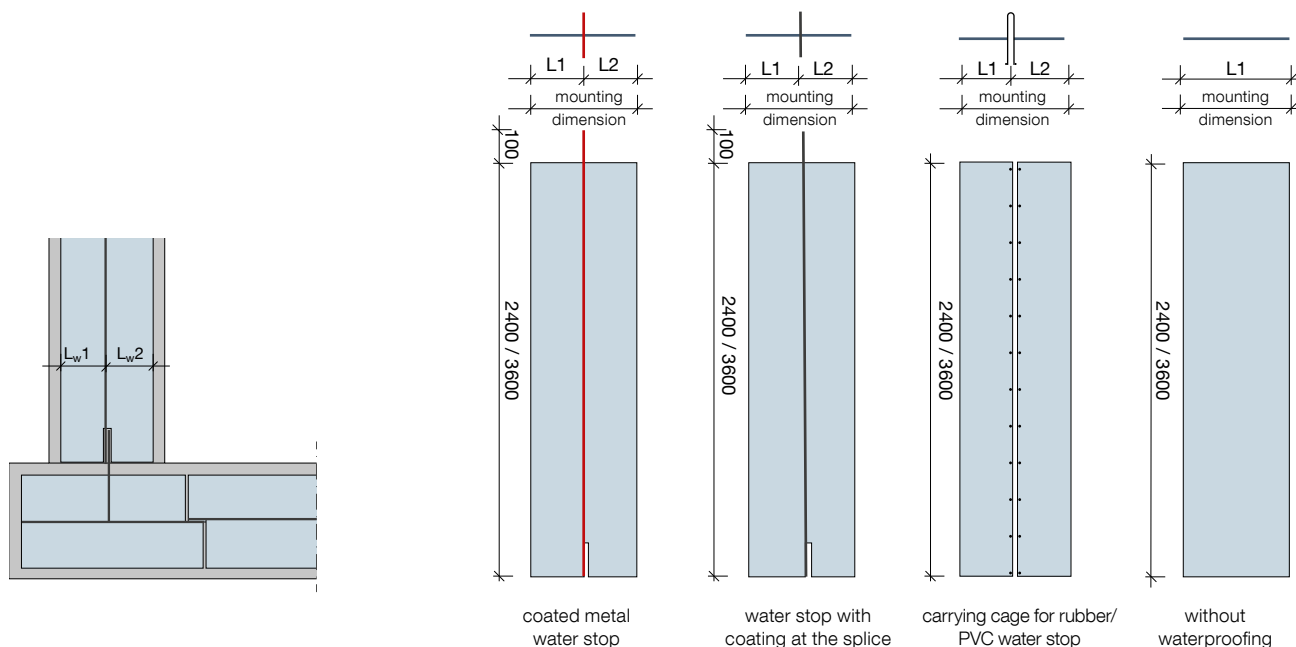
indented joint according to EC2



fine mesh for free flowing, self compacting concrete

Tender / Order form - Stremaform® working joints wall

Dimension



Units

available shapes (standard)

