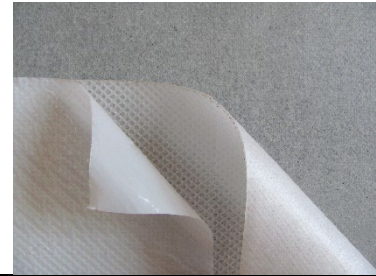


Technical Data Sheet

MAX FRANK formwork liner self-adhesive

Art.-No. ZEMFRASA



Product

Description	MAX FRANK formwork liner self-adhesive is a controlled permeability formwork liner.
Use	<p>The self-adhesive formwork sheeting is used in special cases due to the special fastening option:</p> <ul style="list-style-type: none"> ▪ Fastening with staples on formwork surfaces only possible to a limited extent or not possible at all (steel or hard plastic) ▪ Fastening on formwork with special geometric shapes ▪ Fastening without visible staples ▪ Fastenings on small formwork units
Characteristics / advantages	<ul style="list-style-type: none"> ▪ Multiple use: 2 - 3 times possible (for more information, see Notes) ▪ During concreting, the water and air are discharged in the usual way, which improves the edge concrete zone. ▪ High water/air retention, therefore also suitable for sloping and horizontal surfaces

Test Reports

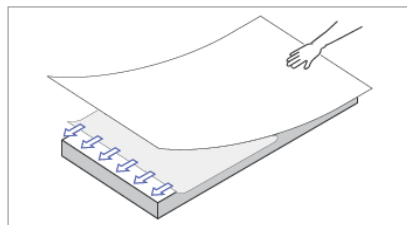
Approvals / Standards	Not required
------------------------------	--------------

Product Data

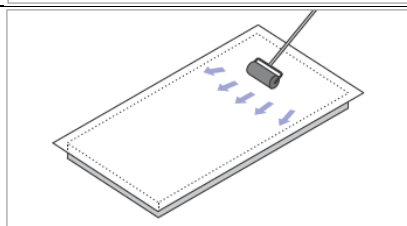
Appearance	ZEMFRASA consists of a grid made of PP and a filter membrane made of PP. The grille and the filter membrane are connected. The PP grid is equipped with a PSA adhesive. Precise computer-controlled application of the PSA adhesive (*Pressure Sensitive Adhesive) to the back of the formwork sheet ensures that the water drainage channels in the grid remain free. The adhesive surface is covered with a film for protection, which is easy to remove just before use, so that the formwork sheet can simply be stuck to the formwork.
-------------------	---

Packaging	Roll size: 2.5 m wide / 35 m long 15 rolls per pallet	
Storage	The rolls must be stored horizontally in their original packaging in a dry place and protected from sunlight, snow, ice, water, excessive heat or sources of heat. The storage temperature must be between +5°C and +30°C.	
Material Properties	Material:	Polypropylene fibres
	Top side (concrete side):	smooth to slightly structured
	Rear side (formwork side):	with special grid (PP) and applied adhesive
	Adhesive:	PSA (*Pressure Sensitive Adhesive) based on thermoplastic material
	Release film:	LDPE, siliconised on one side

Application



Apply material, peel off protective film, press on lightly



Fix the formwork liner to the formwork by applying firm pressure

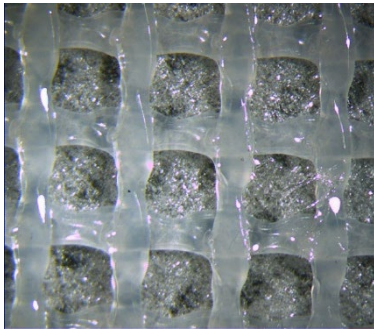
Notes

- In general, the adhesion of the self-adhesive formwork liner to the formwork is influenced by proper installation in accordance with the manufacturer's instructions.
- Additional factors such as air humidity, surface moisture and surface temperature of the formwork, residues of concrete release agent, cleaning agents or concrete / contamination on the formwork skin influence the adhesion of the self-adhesive geomembrane.
- These factors have an increased influence on the success, quality, and multiple use, especially in extreme weather conditions such as low or high temperatures.
- The use of self-adhesive formwork sheeting at formwork temperatures above 40°C for multiple use is only possible to a limited extent.
- At temperatures above 40°C, there is a risk that the adhesion of the self-adhesive layer to the formlining is no longer sufficient and that the formlining will detach from the formlining during demoulding and remain on the concrete.

Hinweise

- The use of the self-adhesive formliner at formwork temperatures below approx. 10°C for repeated use is only possible to a limited extent.
- At temperatures below approx. 10°C, it cannot be ruled out that the adhesion of the self-adhesive layer to the formlining is no longer sufficient and that the formlining will detach from the formlining during demoulding and possibly remain on the concrete.
- Additional fixing using staples is possible, provided that the formwork facing can be stapled. This measure can therefore increase the probability of multiple use.

In any case, it is strongly recommended that the concrete is laid, concreted and demoulded under the conditions expected on site and the planned concrete in order to identify possible optimisation options as early as possible.



Grid structure (reverse side)
with applied adhesive



MAX FRANK formwork liner self-
adhesive mounted on the formwork



Concrete surface after application
from MAX FRANK formwork liner
self-adhesive.

Before using MAX FRANK formwork liner self-adhesive, please clarify technical details with our sales representatives or our technical advisors!

Disclaimer / Notes:

The usability of the products in the specific installation situation must be checked by the user. This data sheet is constantly updated. Technical changes are therefore expressly reserved without prior information of the customer. The currently valid version can be found on our website at: www.maxfrank.com. Our General Terms and Conditions of Sale apply in addition.

MAX FRANK Group

Max Frank GmbH & Co. KG | Mitterweg 1 | 94339 Leiblfing | Germany | info@maxfrank.com