

# Egcodorn-Software | Overview

After the program start the following screen is displayed with the groups 1 - 6:

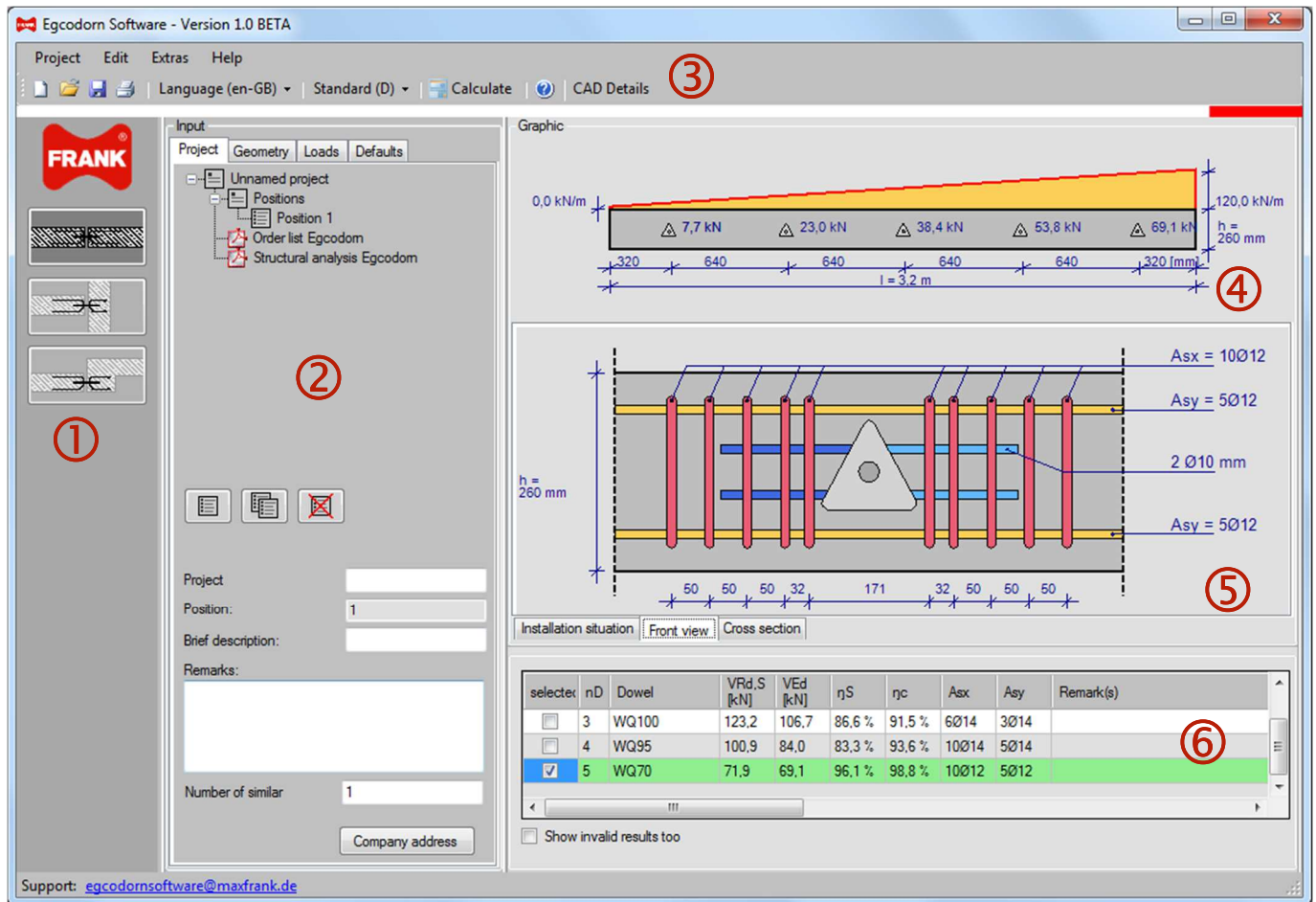


Fig. 1: Working screen Egcodorn-Software

- ① Selection of different situations
- ② Input of project data, geometry, loads and and presettings (see next page for details)
- ③ Selection of different languages and standards
- ④ Display of the load curve
- ⑤ Display of the installation situation, front view and cross section
- ⑥ Output of internal forces and utilization factor for the Egcodorns.  
The most economical solution is highlighted by colour.

# Egcodorn-Software | Overview

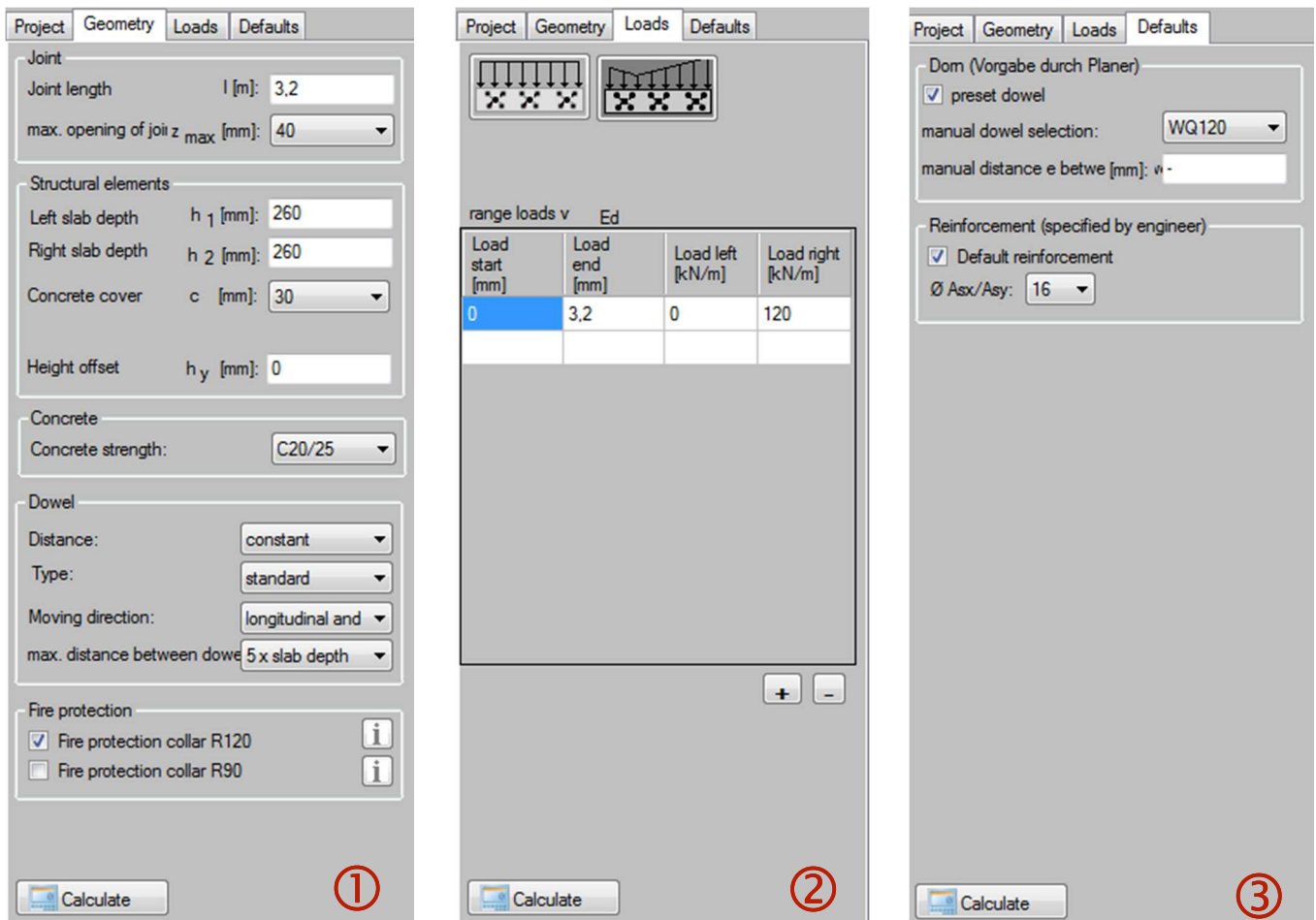


Fig. 2: Input of geometry, load curve and presets

- ① Input of joint geometry and structural element geometry as well as concrete strength. You can vary the following dowel parameters:
  - constant or variable dowel distance
  - standard type or modular
  - longitudinal or longitudinal and transversal
  - dowel distance 5 x slab height or unlimited
- ② Input of any load curves and constant/trapezoid loads
- ③ The following defaults are possible:
  - selection of a defined Egcodorn or no default value („-“)
  - default of a defined dowel distance or no default value („-“)
  - default of a defined reinforcement diameter

Calculate:	<b>F12</b>
Output structural analysis:	<b>Ctrl + P</b>
Situation slab-slab:	<b>Ctrl + 1</b>
Situation slab-wall:	<b>Ctrl + 2</b>
Project:	<b>Ctrl + F1</b>
Geometry:	<b>Ctrl + F2</b>
Loads:	<b>Ctrl + F3</b>
Presettings:	<b>Ctrl + F4</b>
Company address:	<b>Alt + C</b>
Contents:	<b>F1</b>
Contact:	<b>F2</b>
Info:	<b>F3</b>

For **questions** and **helpful suggestions** about the Egcodorn-Software please contact our customer service:

- **e-mail** [technik@maxfrank.de](mailto:technik@maxfrank.de) or
- **contact our branch office** in your country (you can find it within the Egcodorn-Software)

© Max Frank GmbH & Co. KG