

Ad Fontes Musica

Leipzig



© Robert Mehl, Aachen

"Ad Fontes Musica" is a new building of three city villas in Leipzig. Involving the use of formwork elements and shear force dowels.

Work started on the three city villas - Allegro, Belcanto and Crescendo - in Leipzig since the middle of 2013. They belong to the new Ad Fontes Musica quarter. While building the three villas, care was taken to involve the architecture of the neighbouring buildings. The old is connected to the new. For example, the listed coach house of the Villa Giesecke, which was destroyed in the war, has been integrated into the new building.

The historic trees have also been integrated into the garden design. The three villas house 32 high-quality and exclusive private apartments with large loggias and terraces. The highest quality materials were used in the construction and the furnishings, i.e. real wood parquet, light and dark, polished stainless steel, tinted glass surfaces and high gloss paint, to emphasise the exclusivity of the villas.

The aim of openness, freedom and clarity of line was deliberately pursued in the exterior and interior design. The construction budget was € 12.5 million and was completed in March 2014.

Type of building:

Clients and Developers:

Ad Fontes Musica Projektgesellschaft mbH

www.ad-fontes-musica.de

Architect:

Baukomplex Leipzig

www.baukomplex.de

Building contractor:

Bilfinger Hochbau GmbH

Niederlassung Leipzig

www.hochbau.bilfinger.com

Distributor:

T. Schlafge Schalungsbedarf GmbH

www.schlafge.de

Completion:

2014

Ad Fontes Musica

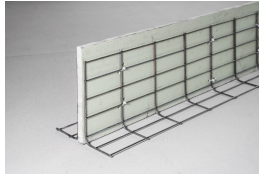
Leipzig



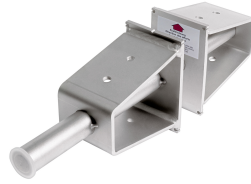
Products used:



Stay-in-place formwork for working joints Stremaform® with coated metal water stop



Stay-in-place formwork for expansion joints Stremaform®



Shear force dowel Egcodorn® DND



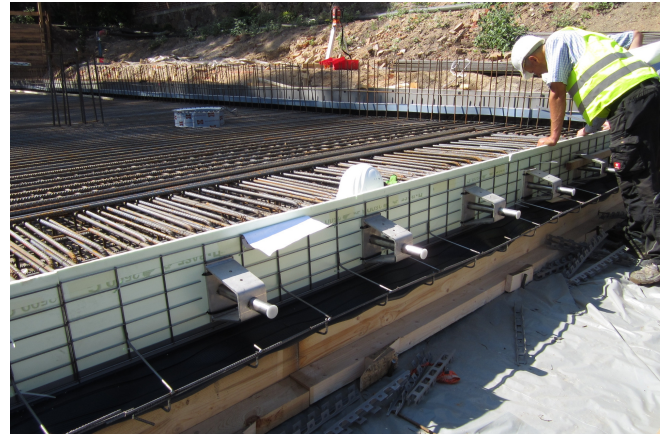
© www.denkmalimmobilien.info



© Robert Mehl, Aachen



© Robert Mehl, Aachen



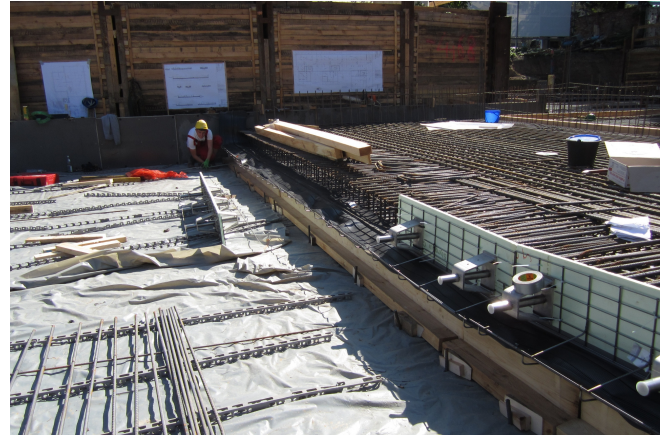
© www.maxfrank.com

Ad Fontes Musica

Leipzig



© www.maxfrank.com



© www.maxfrank.com