

# Clem Jones Tunnel

Brisbane



**Type of building:**  
Tunnel

**Completion:**  
2009

© www.maxfrank.com

**For the Clem Jones Tunnel project in Australia, MAX FRANK supplied fibre-reinforced concrete spacers as well as the Intec® injection hose system for joint seal.**

The CLEM7 project in Australia is one of the country's most important infrastructure projects. It is a continuous 6.8-kilometre multi-lane highway and a 4.8-kilometre tunnel constructed of state-of-the-art precast concrete tunnel segments.

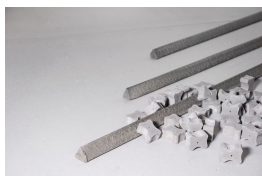
MAX FRANK products have been used for major tunnelling projects worldwide for many years as they meeting the highest performance and quality requirements.

# Clem Jones Tunnel

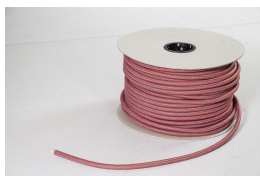
Brisbane



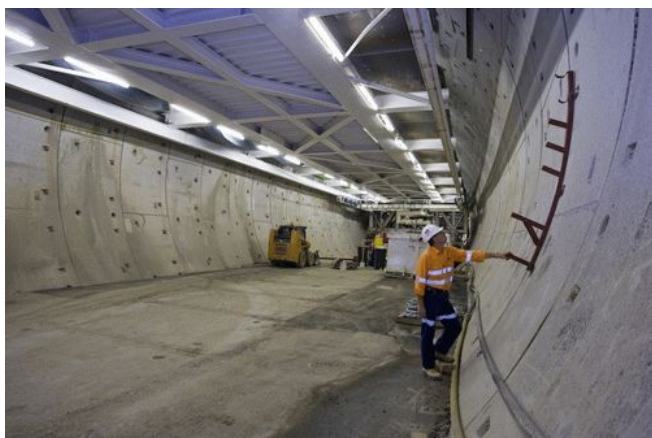
## Products used:



Fibre concrete spacers



Injection hose system Intec®



© www.maxfrank.com



© www.maxfrank.com