

# Crane runway for container terminal

Glauchau



© www.maxfrank.com

## Type of building:

### Clients and Developers:

GVZ Entwicklungsgesellschaft  
Südwestsachsen mbH, Glauchau

### Engineers/ Specialist Planners:

Ingenieurbüro Klier + Partner,  
Glauchau  
[www.klier-partner.de](http://www.klier-partner.de) Ingenieurbüro  
Thomas, Chemnitz  
[www.ing-thomas.de](http://www.ing-thomas.de)

### Distributor:

Günter Kropfelder Baubedarf GmbH &  
Co. KG, Korbußen  
[www.kropfelder.de](http://www.kropfelder.de)

### Completion:

2015

**For the crane runway foundation of the container terminal in Glauchau, shear force dowels of the type Egcodorn® DND were used for dynamic loads.**

In the new expansion stage, Egcodorn® DND shear force dowels for dynamic loads were used for the crane runway foundation. 126 shear force dowels were used in the two 340 m long pile beams. Each of the approx. 15 m long sections were horizontally coupled with three Egcodorn® DND 300 shear force dowels.

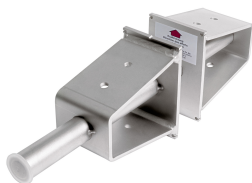
Evidence of fatigue-relief was required for approval of the crane operation. The Egcodorn® DND enables the transmission of positive and negative shear forces in the expansion joints, even in fatiguing load cases.

Under dynamic conditions the Egcodorn® DND must be used in accordance with national technical approval. A particularly high resistance to dynamic stresses is achieved by the special anchor body design and the special execution of the welding seams. Typical fields of application are permanent carriageways, crane runways, roadway crossings or noise barriers.

# Crane runway for container terminal

Glauchau

## Products used:



Shear force dowel Egcodorn®  
DND



© www.maxfrank.com



© www.maxfrank.com



© www.maxfrank.com



© www.maxfrank.com