

# Day care centre

Haseldorf



© www.maxfrank.com

**The Pecafile® universal formwork elements were used for the complicated foundations of the day care centre in Haseldorn.**

An extremely high-specification day care centre has been built in Haseldorf. The architect Lisa Thee integrated the prevailing axes into the interior design. Based on the idea of two wings, the angel-like building form which resulted has become an architectural feature in the small town.

Pecafile® universal formwork elements were the ideal solution for producing the complex forms of the foundations. The contract was awarded because of the minimal installation time. Most of the assembly took place in the factory according to the specifications of the client. 135° curves were created at the corners of the foundation using Pecafile® VR6 and a total of 300 square meters of this environmentally friendly U-formwork was installed.

## Type of building:

### Building contractor:

Sommer u. Söhne GmbH, Horst  
[www.sommer-soehne.de](http://www.sommer-soehne.de)

### Distributor:

Behrens+Lüneburger, Hamburg  
[www.bl-baumaschinen.de](http://www.bl-baumaschinen.de)

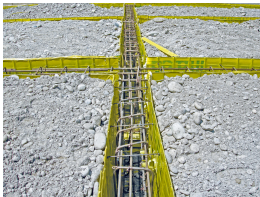
### Completion:

2012

# Day care centre

Haseldorf

## Products used:



Permanent formwork Pecafil®  
- foundation formwork



© www.maxfrank.com



© www.maxfrank.com



© www.maxfrank.com



© www.maxfrank.com