

Finance tower Intesa Sanpaolo

Turin



Type of building:

Clients and Developers:

Intesa Sanpaolo S.p.A.

Architect:

Renzo Piano

Building contractor:

Geom. Orlando

Completion:

2014

© Ravanellidiciamo

With 39 floors the 218-meter-high Intesa Sanpaolo tower in Turin is the headquarters of the largest Italian credit institution.

The building of 218 meter high office and administration building of Intesa Sanpaolo has been underway in the centre of Turin since March 2009. The headquarters of the largest Italian credit institution is a 39 floor finance tower. In addition to offices for 3,000 employees, architect Renzo Piano has also planned roof gardens and technology solutions that reduce energy consumption by one third.

The building contains 800 tons of Coupler screw connections from MAX FRANK. The challenging requirements for force transfer in the working joints were fulfilled with the combination of Coupler, Stabox® and Stremaform® products. Due to the variation of different joint formwork elements, the elements can be manufactured in both the transverse and shear directions as indented joint design. The joint elements are made in-house and delivered to the building site prefabricated and ready to assemble.

Finance tower Intesa Sanpaolo

Turin



Products used:



Stay-in-place formwork for working joints Stremaform®



Continuity strip Stabox®



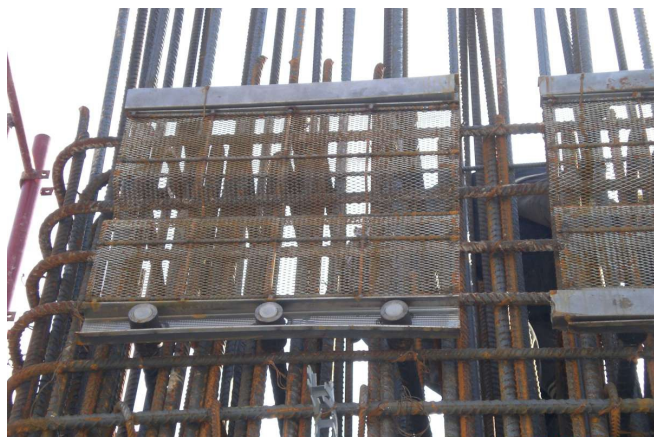
© Ravanellidiciamo



© www.maxfrank.com

Finance tower Intesa Sanpaolo

Turin



© www.maxfrank.com



© www.maxfrank.com