

Fortress Wapping, London Dock

London, E1W 2AD



Illustration Fortress Wapping, London Dock

© Berkeley Group

Type of building:

Clients and Developers:

The Berkeley Group
www.berkeleygroup.co.uk

Building contractor:

Morrisroe Limited
www.morrisroe.co.uk

Completion:

2019

Project link:

<https://www.berkeleygroup.co.uk/new-homes/london/wapping/london-dock?userSearchID=fb27d8a0-e781-4003-87f1-ebc5421832>

An exclusive collection of penthouses at London Dock were recently unveiled.

London Dock has been closed to the public for the past 200 years but the 15-acre site, north of the River Thames, has now been transformed. The mixed-use development incorporates residential, retail, leisure and commercial elements.

An exclusive collection of penthouses at London Dock were recently unveiled. Duplex penthouses will occupy the top two floors of Admiral Wharf and Alexander Wharf, with views towards the Thames and the City, over to Canary Wharf and across Wapping.

Residents benefit from a wide selection of onsite amenities, including a 24-hour concierge service, a gymnasium, swimming pool, sauna and steam rooms, a treatment room, squash court and screening room.

Overlooking Gauging Square is Clipper Wharf, which offers a selection of Manhattan one, two and three bedroom apartments and penthouses. The apartments feature high-specification interiors, including custom-designed kitchens and bathrooms, expansive living spaces, full-height glazing and a balcony or terrace.

[Pecavoid®](#) RDS160 10/15 for 275mm deep slab and pilecaps typically 850mm thick have been designed for the suitability of the project.

Pecavoid® is the [BBA approved](#) cellular void former from MAX FRANK, designed to combat the effects of clay heave on foundations.

Pecavoid® is designed to compress when ground heave takes place. Manufactured from interlocking sections of expanded polystyrene, it

Fortress Wapping, London Dock

London, E1W 2AD



is lightweight and easy to install.

Benefits include:

- Reduces uplift pressure, protecting buildings & foundations
- Easy to install to form required void
- Does not degrade or contain CFCs or HCFCs

Fortress Wapping, London Dock

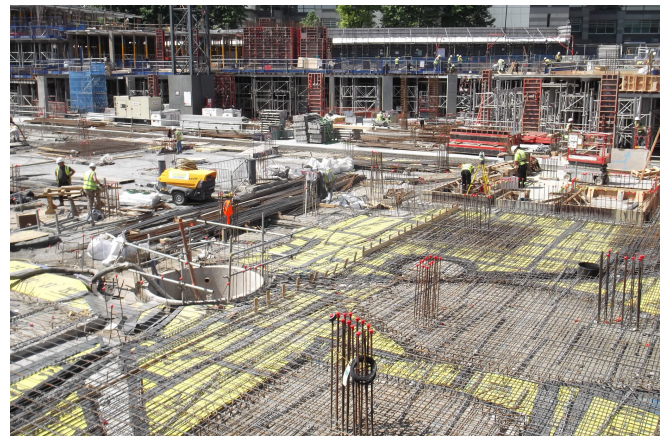
London, E1W 2AD



Products used:



Artists impression Fortress Wapping, London Dock
© Berkeley Group



Ground heave solution Pecavoid®
© www.maxfrank.com



Ground heave solution Pecavoid®
© www.maxfrank.com



Ground heave solution Pecavoid®
© www.maxfrank.com

Fortress Wapping, London Dock

London, E1W 2AD



Ground heave solution Pecavoid®
© www.maxfrank.com