

# Royal Albert Wharf: Gallions Quarter

London



© Notting Hill Genesis

**MAX FRANK supplied Shearail® punching shear reinforcement and Stremaform® jointing formwork to Gallions Quarter - a multi-phase development, located in the Royal Albert Basin area of the Royal Albert Docks.**

**Gallions Quarter** and **Great Eastern Quays** are both located in the Roayl Albert Basin area of the **Royal Albert Docks**. Together, both sites will deliver new homes into the area, which is being marketed as **Royal Albert Wharf**.

Surrounding nearly 250 acres of water, the Royal Docks are the largest enclosed docks in the world. More than 9,000 new homes will be constructed in the area by 2027. This development comprises three different sites into a single scheme with integrated masterplanning from NHG and a coherent design approach.

“Identified as the capital’s next business district, the historic Royal Docks area will gain thousands of homes in the next 15 years. Our Royal Albert Wharf project is a step towards this wider regeneration, building over 1,800 homes with at least 40% for affordable housing” – NHG.

Gallions Quarter is a multi-phase development adjacent to Gallions Reach DLR station near Royal Albert Dock. The area surrounding the Royal Docks is experiencing significant regeneration and substantial commercial investment following the construction of a new Crossrail station at Custom House.

In 2018, the Royal Albert Wharf development was awarded the RICS London Development Property of the Year Award and the RIBA London Award.

**Shearail® & Stremaform® from MAX FRANK:**

## Type of building:

## Clients and Developers:

[Notting Hill Genesis \(NHG\)](#)

## Architect:

[Maccleanor Lavington Architects](#),  
[Fielden Clegg Bradley Studios](#)

## Engineers/ Specialist Planners:

[Savills Plc](#), [Campbell Reith Hill](#)

## Industry:

## Building contractor:

[Galliford Try Plc](#), [Telford Homes Plc](#)  
[Corbyn Construction](#) (SubContractor)

## Completion:

2019

## Project link:

<https://www.nhhg.org.uk/building-homes/developments/royal-albert-wharf-newham/>

# Royal Albert Wharf: Gallions Quarter

London



[Shearail®](#) was specified and installed to increase the shear resistance of the concrete slabs and safely transfer the shear loads from the slabs to the columns below.

As **the only punching shear solution approved by both BBA and CARES**, Shearail® enables the design of slimmer floors and reduced slab thickness - even where higher loads have been designed.

Manufactured from approved materials under a certified Quality Management System, Shearail® is a pre-fabricated solution which provides Engineers and Contractors with the assurance that the material is from a traceable source and has been independently tested and verified for use in concrete floors in accordance with BS EN 1992-1-1 (EC2) and BS 8110 standards.

[Stremaform®](#) is a proven concrete to concrete jointing system which enables the Contractor to pour a sequence of concrete pours, whilst attaining an established concrete bond throughout the joint - ultimately reducing the construction period.

The construction of any concrete joint is simplified by using Stremaform® self-supporting permanent jointing system - the process is thus accelerated allowing significant time and cost advantages to be achieved on-site.

# Royal Albert Wharf: Gallions Quarter

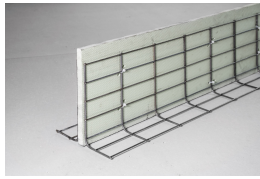
London



## Products used:



Stay-in-place formwork for working joints Stremaform®



Stay-in-place formwork for expansion joints Stremaform®



Punching shear reinforcement Shearail®



Royal Docks Dev.  
© Notting Hill Genesis



Royal Docks Dev.  
© Galliford Try Plc



Royal Docks Dev.  
© hunters.co.uk



Royal Docks Dev.  
© hunters.co.uk



# Royal Albert Wharf: Gallions Quarter

London



Royal Docks Dev.  
© gallionsquarter.com