

Nová Karolina Park

Ostrava



© www.maxfrank.com

Nová Karolina is one of the largest urban development projects in the Czech Republic. Modern apartments as well as office and commercial buildings have grown up in Ostrava.

Nová Karolina is one of the largest urban development projects in the Czech Republic. Three new buildings are being built on a 32-hectare site just 500 meters from the historic centre of Ostrava. One of these, the Nová Karolina Park, is an impressive sight with its modern design and imaginative architecture. The six-storey "Green Building" covers an office space of 24,600 square meters, the retail space on the ground floor is spread over 3,700 square meters and the basement has 280 parking spaces. The modern monoblock was designed by the architects Vit Máslo and David R. Chrisholm (CMC architects) in line with the existing buildings.

To ensure rapid progress on the construction site, the Tubbox® column former was used to construct several A and V concrete columns. MAX FRANK "Rondo" spacers made of fibre-reinforced concrete were installed to simplify installation of the column formers. Dowel systems and the Egcosono stair landing bearing were also supplied for impact sound insulation.

Type of building:

Building complex

Distributor:

Podzemni Stavby Brno s.r.o.

Completion:

2013

Project link:

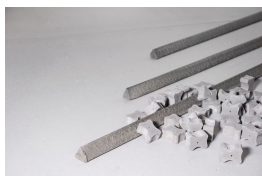
<http://www.novakarolinapark.cz>

Nová Karolina Park

Ostrava



Products used:



Fibre concrete spacers



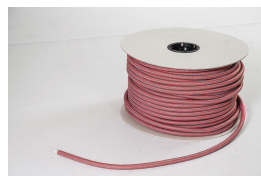
Column formers Tubbox® - custom shapes



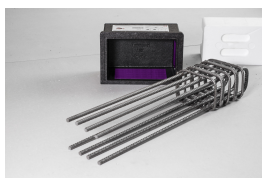
Shear force dowel Egcodorn®



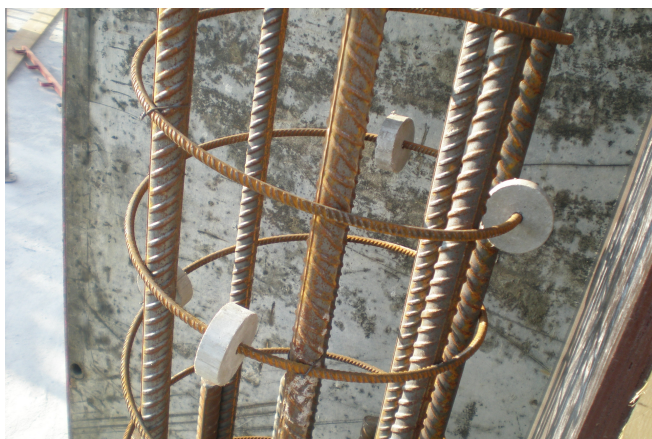
Metal waterstop Fradiflex®



Injection hose system Intec®



Stair landing bearing
Egcosono



© www.maxfrank.com



© www.maxfrank.com

Nová Karolina Park

Ostrava



© www.maxfrank.com



© www.maxfrank.com

Nová Karolina Park

Ostrava



© www.maxfrank.com