

# Skyline Plaza Frankfurt

Frankfurt am Main



© www.maxfrank.com

**The expansion joints were constructed with Stremaform® formwork elements with internal expansion rubber water bar and integrated Egcodorn shear force dowels.**

With a sales area of 38,000 square meters, the Skyline Plaza in the new European quarter in Frankfurt opened on 29th August 2013. The shopping centre comprises around 180 shops, service and catering businesses. The large roof terrace measuring approximately 10,000 square meters offers plenty of space for a varied programme of events and for a 1,000 square meter roof garden restaurant. There is also a premium Hamburg fitness, wellbeing and body care provider on site. This is the largest fitness and wellness centre in Frankfurt am Main.

The interior design represents the concept of a walk through Frankfurt. At the heart of the centre is a plaza with tree sculptures and wooden elements. Thanks to its sustainable construction, the Skyline Plaza has already been awarded a gold pre-certificate by the German Sustainable Building Council (DGNB). The certificate has been awarded for the revitalization of inner city areas, the high-quality design of the outer façade, the greening of the roof garden and natural irrigation with collected rainwater.

The total investment amounted to 360 million Euros. Upon completion, Allianz will take over 80% of the shopping centre. 10% each remain with the joint venture partners ECE and CA Immo.

The expansion joints were constructed with Stremaform® formwork elements with internal expansion rubber water bar or expansion end rubber water bar and integrated Egcodorn shear force dowels. Over 200 DNB70 shear force dowels were installed in the walls and approx. 600 Egcodorn DQB70 were used for the transmission of longitudinal and transverse movements in floor slabs and ceilings. Different Stremaform® elements were produced for the different

## Type of building:

### Distributor:

Haberstroh Baubedarf GmbH,  
Rödermark  
[www.haberstroh-gmbh.de](http://www.haberstroh-gmbh.de)  
Abdichtungstechnik Napravnik,  
Göppingen  
[www.weisse-wanne.com](http://www.weisse-wanne.com)

### Completion:

2013

### Project link:

<https://www.skylineplaza.de/>

# Skyline Plaza Frankfurt

## Frankfurt am Main



areas of application, e.g. floor slab to wall or wall to ceiling joint transitions, angled elements and wall closure cappings.

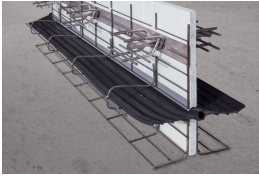
With the prefabricated Stremaform® formwork elements for expansion joints, work on the building site was minimised to a great degree.

# Skyline Plaza Frankfurt

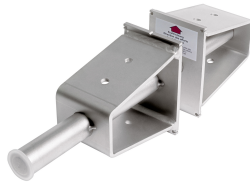
Frankfurt am Main



## Products used:



Stay-in-place formwork for expansion joints Stremaform® with rubber water bar cage and shear force transmission



Shear force dowel Egcodorn® DND



© www.maxfrank.com



© www.maxfrank.com



# Skyline Plaza Frankfurt

Frankfurt am Main



© www.maxfrank.com



© www.maxfrank.com