

Tennis Performance Centre

Manacor



© www.maxfrank.com

The permanent formwork Pecafile® universal formwork elements was chosen for the concreting work on the individual foundations and the floor slab.

Rafael Nadal is one of the best tennis pros in the world. In his home town of Manacor, he wants to give young up-and-coming players the chance to combine their school and sports education in a 24,000 m² performance centre.

Construction of the 20 million Euro project started in November 2014. The new performance centre is to open in May 2016 and will include 18 tennis courts, a sports museum and a sports medicine clinic. Residential complexes are also to be built for use by young talented players and professionals in the future.

The concreting of the individual foundations and the floor slab was to take place in one concreting section so the decision was made to use MAX FRANK's permanent formwork Pecafile® universal formwork elements. 760 Pecafile® formwork elements were delivered by ship to the island of Mallorca as flat material. Once at the building site they were then bent into single and strip foundations.

Benefits of using Pecafile® for this construction project:

- Great time savings, since the individual foundations and the floor slab could be executed in one concreting section.
- Easy transport of the flat material.
- No special lifting equipment or electricity was needed for processing on building site.

Type of building:

Architect:

Alonso Balaguer y Arquitectos
Asociados, Barcelona
www.alonsobalaguer.com

Building contractor:

DRAGADOS ESPAÑA, Madrid
www.dragados.com

Distributor:

Verkaufsabwicklung: PLAKA Group
Spain
www.plakagroup.com

Completion:

2016

Project link:

<https://rafanadalacademy.com/de/>

Tennis Performance Centre

Manacor

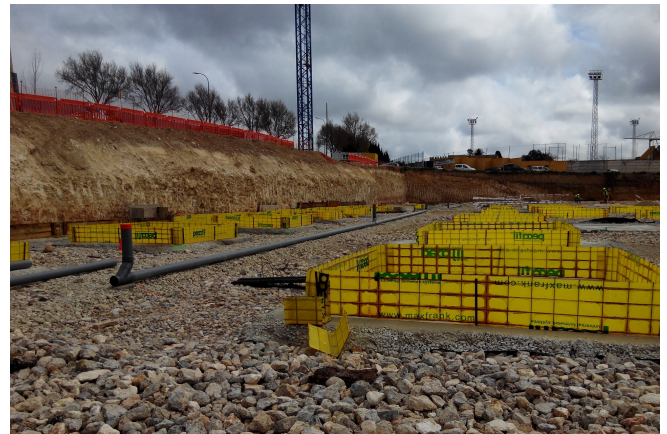
Products used:



Permanent formwork Pecafile®



© www.maxfrank.com



© www.maxfrank.com



© www.maxfrank.com