

Victoria Park

Malmö



Victoria Park Malmö
© www.maxfrank.com

Type of building:

Clients and Developers:

Victoria Park Construction & Project

Architect:

Chroma Arkitekter AB
<http://chromaarkitekter.se/>

Building contractor:

PEAB Sverige AB <https://peab.se/>

Completion:

2009

The residential district Victoria Park consists of a total of 133 apartments and is located in the Limhamn district of Malmö.

The Victoria House is the heart of the housing complex. Shared facilities such as reception, lounge, restaurant, bar, swimming pool, cinema, etc. are available to residents.

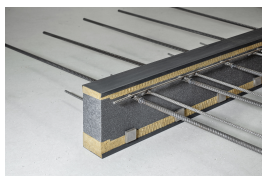
MAX FRANK supplied the thermal break balcony connector EgcoBox®. Thermal bridges can be avoided with the thermally insulating EgcoBox® cantilever connector.

Victoria Park

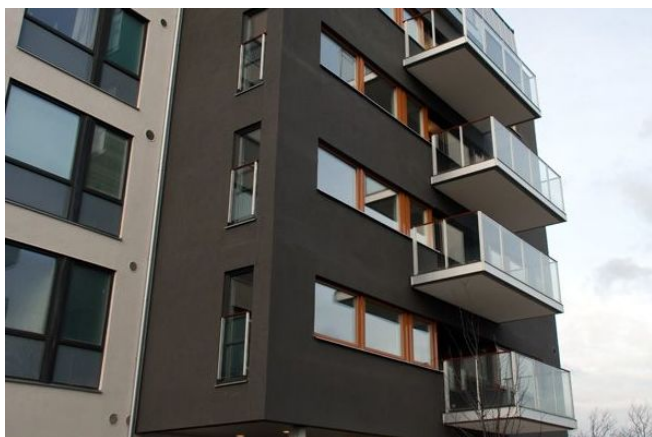
Malmö



Products used:



Thermal break balcony
connector Egcobox®



© www.maxfrank.com