

Sophienkontor

Kiel



Das Sophienkontor Kiel

© urban space Immobilien Projektentwicklung GmbH & Co. KG

A modern office and commercial building with an underground car park is being built on a site in the port city of Kiel, in the direct vicinity of the Kiel Fjord.

This attractive new building in the port city of Kiel offers space on approx. 6,200 m² for office, archive and retail space. The location of The Sophienkontor boasts excellent transport links and is perfectly accessible both by public transport and by car. The building also has an underground car park with almost 80 car parking spaces and 96 bicycle stands.

In addition to an underground car park in the basement, parts of the building will also be developed for higher-value cellar use. Due to the prevailing subsoil and groundwater conditions, the basement levels were constructed within a water pressure-retaining trough excavation pit.

The section of the building covered with Zemseal® meets service class A - the remaining part of the building meets service class B. Due to the excellent crack bridging of the Zemseal® sub-structure waterproofing membrane, the construction can be carried out without additional measures as demonstrated in the pictures. For the structural walls, Zemseal® was installed against the concrete surface on the side of the excavation pit. All penetrations, such as pipes, were reliably attached to the new concrete using the composite membrane.

The SOPHIENKONTOR is the first building in Kiel to be awarded the DGNB sustainability certification.

Type of building:

Clients and Developers:

urban space Immobilien
Projektentwicklung GmbH & Co.KG
<http://www.urbanspace.eu/>

Architect:

Florian Fischötter Architekt GmbH
<https://ff-a.net/>

Building contractor:

Hermann Reese Baugeschäft GmbH
& Co. KG
<https://reesebau.de/>

Completion:

2021

Project link:

<https://www.sophienkontor.de/#home>

Sophienkontor

Kiel



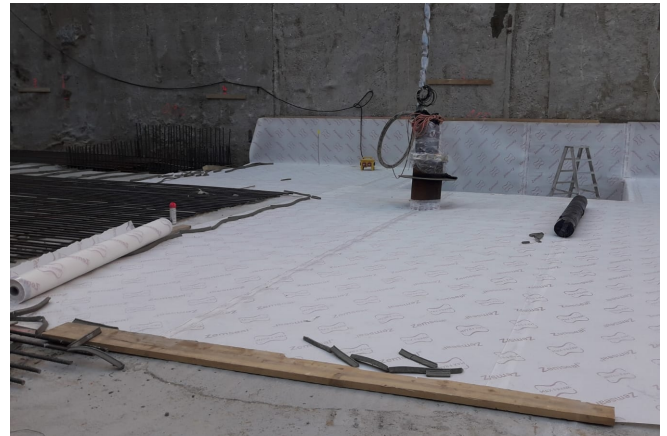
Products used:



Sub-structure waterproofing
system Zemseal®



Slotted wall with Zemseal®
© www.maxfrank.com



Area with high-quality cellar use
© www.maxfrank.com



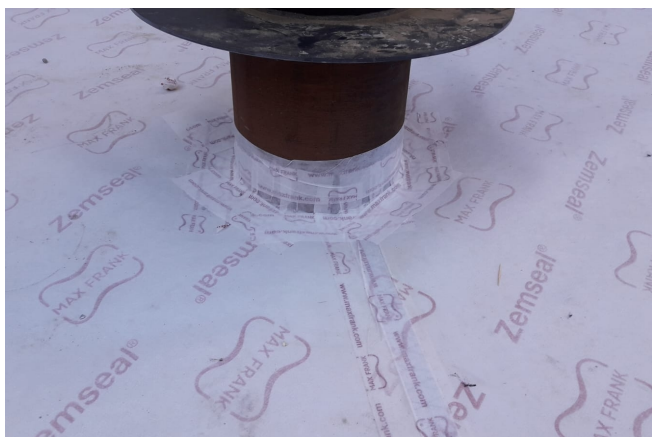
Corner formation with Zemseal®
© www.maxfrank.com



Foundation grounding with Zemseal®
© www.maxfrank.com

Sophienkontor

Kiel



Annular space sealing with Zemseal®
© www.maxfrank.com



The Sophienkontor Kiel
© urban space Immobilien Projektentwicklung GmbH & Co. KG