

Crane runway for container terminal

Glauchau



© www.maxfrank.com

Type of building:

Clients and Developers:

GVZ Entwicklungsgesellschaft
Südwestsachsen mbH, Glauchau

Engineers/ Specialist Planners:

Ingenieurbüro Klier + Partner,
Glauchau
www.klier-partner.de Ingenieurbüro
Thomas, Chemnitz
www.ing-thomas.de

Distributor:

Günter Kropfelder Baubedarf GmbH &
Co. KG, Korbußen
www.kropfelder.de

Completion:

2015

For the crane runway foundation of the container terminal in Glauchau, shear force dowels of the type Egcodorn® DND were used for dynamic loads.

In the new expansion stage, Egcodorn® DND shear force dowels for dynamic loads were used for the crane runway foundation. 126 shear force dowels were used in the two 340 m long pile beams. Each of the approx. 15 m long sections were horizontally coupled with three Egcodorn® DND 300 shear force dowels.

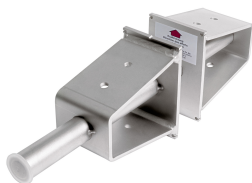
Evidence of fatigue-relief was required for approval of the crane operation. The Egcodorn® DND enables the transmission of positive and negative shear forces in the expansion joints, even in fatiguing load cases.

Under dynamic conditions the Egcodorn® DND must be used in accordance with national technical approval. A particularly high resistance to dynamic stresses is achieved by the special anchor body design and the special execution of the welding seams. Typical fields of application are permanent carriageways, crane runways, roadway crossings or noise barriers.

Crane runway for container terminal

Glauchau

Products used:



Shear force dowel Egcodorn®
DND



© www.maxfrank.com



© www.maxfrank.com



© www.maxfrank.com



© www.maxfrank.com