

# Hotel Carat

Grömitz



© Ralf Hippenstiel Architekt BDA

## Requirements for the balcony types at the four-star Hotel Carat could only be solved with custom versions of the Egccobox® cantilever connectors.

The extension also includes leisure facilities in the form of wellness, SPA and swimming pool areas as well as a new entrance lobby which is shared with the existing hotel building. The façade in the existing building recedes floor by floor and has also been included in the expansion, forming a flowing transition with the curved roof construction.

The project face particular challenges in the floor-by-floor receding façade, the different heights from balcony to ceiling and the detailed planning. Most of the 1,200 Egccobox® cantilever connectors were custom designed to accommodate the above-mentioned boundary conditions. An optimal detailed solution for 49 different balcony types was developed with the Egccobox® product, with convincing constructive, thermal and economic results.

The balconies were manufactured as precast elements in the Lebatz concrete plant. The reinforcement layout, the drainage openings and the location of the lifting anchors were all considered in the structural dimensioning of the Egccobox® cantilever connector.

The Egccobox® thermally insulating cantilever connector:

- can be individually adapted to the respective requirements
- is officially approved by the DIBt
- free dimensioning software

MAX FRANK supplied further products from the categories reinforcement and formwork technology in addition to the balcony connections.

### Type of building:

Hotel

### Clients and Developers:

Ferienapartments Strandallee  
Grömitz GmbH, Dortmund

### Architect:

Dipl.-Ing. Ralf Hippenstiel Architekt  
BDA, Herdecke  
[www.ralfhippenstiel.de](http://www.ralfhippenstiel.de)

### Engineers/ Specialist Planners:

Dipl.-Ing. Uwe Bieber, Dortmund und  
HvH-Ingenieure, Braunschweig  
[www.bieber-ingenieure.de](http://www.bieber-ingenieure.de)

### Building contractor:

Müller Bau GmbH & Co. KG, Bad  
Hersfeld

### Distributor:

Behrens + Lüneburger, Hamburg  
[www.bl-baumaschinen.de](http://www.bl-baumaschinen.de)

### Completion:

2015

# Hotel Carat

Grömitz



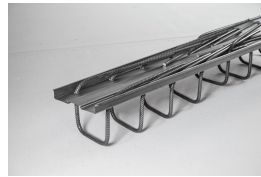
## Products used:



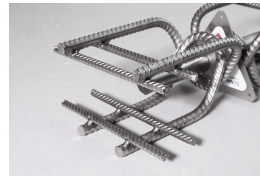
Stay-in-place formwork for working joints Stremaform®



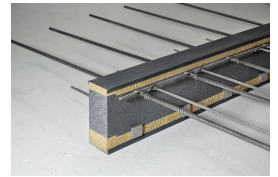
Column formers Tubbox®



Continuity strip Stabox®



Shear force dowel Egcodorn®



Thermal break balcony connector Egcobox®



© Ralf Hippenstiel Architekt BDA



© www.maxfrank.com



© www.maxfrank.com



© www.maxfrank.com