

Langen Foundation, Museum Island Hombroich

Neuss



© www.maxfrank.com

Type of building:
Museum building

Architect:
Tadao Ando

FRANK distance tubes and sealing cones were used for the exposed concrete surfaces of the Museum Island Hombroich.

The museum is one of the few buildings by the Japanese architect Tadao Ando to be built in Europe. The exposed concrete surfaces with uniform recurring panel fields and the points of the shutter ties between the formwork sides is a recurring motif in the projects of Tadao Ando.

MAX FRANK products were used in this project. The homogeneous sealing cones, which have been colour-matched to the exposed concrete, support the even rhythm of the "pointillist" exposed concrete surfaces.

Langen Foundation, Museum Island Hombroich

Neuss

Products used:



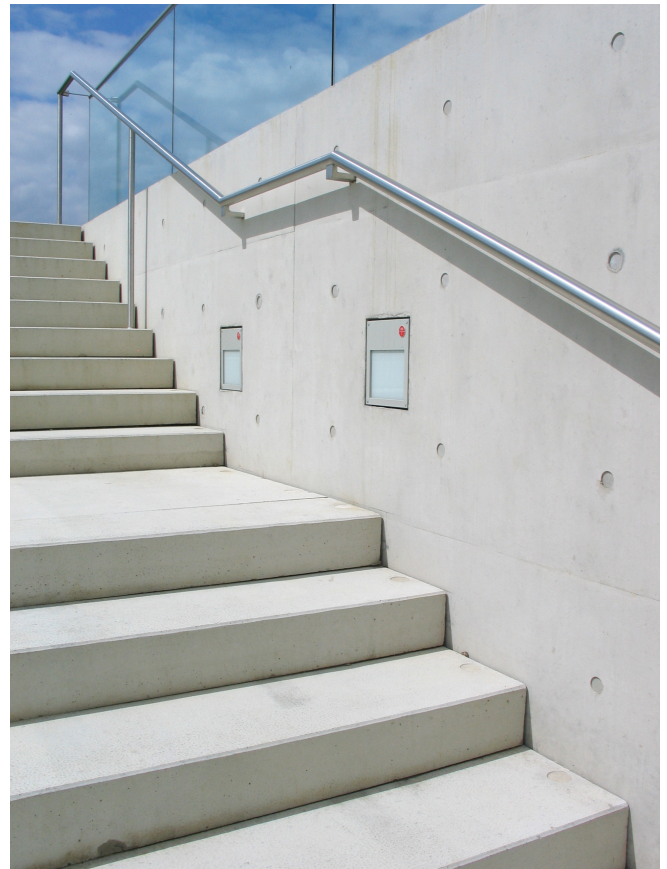
Fibre concrete distance tubes



Fibre concrete sealing cones



© www.maxfrank.com



© www.maxfrank.com

Langen Foundation, Museum Island Hombroich

Neuss



© www.maxfrank.com



© www.maxfrank.com