

Residential and commercial building

Deggendorf



© PNP / Binder

In the floodplain of Deggendorf, watertight seals of the sophisticated building geometries were created with the Zemseal® sub-structure waterproofing system.

The KARL Group is currently building three office and residential buildings in the Danube City Deggendorf.

The buildings have one straight-through, approximately 100 metre long common ground floor. Commercial areas and medical practices are to be accommodated here. Three clearly separated residential buildings, each with three storeys, stand on the common ground floor. Six to eight residential units are planned. A connecting bridge - a so-called "Skywalk" - will be built between the two northern buildings on the top floor. A lift also leads up to this bridge. Not only the bridge but also the elevator shaft will be made of glass.

The basement levels, which are subject to ground and strata water, were completely lined with Zemseal® Premium fresh concrete composite membrane. The complex foundation of the building required haunches and drilled posts, and a floor slab with a thickness of up to 80 cm. With Zemseal®, the extravagant geometries were able to be sealed without a great deal of additional effort in a targeted and water pressure-tight fashion. The combination of a watertight construction and fresh concrete composite technology ensures the permanent adherence to the high utilisation requirements on the below-ground levels.

Type of building:
Businesshouses

Clients and Developers:
Karl-Gruppe, Deggendorf

Architect:
Kress Architekten, Deggendorf

Building contractor:
Mader Bau GmbH, Bischofsmais

Completion:
2016

Residential and commercial building

Deggendorf



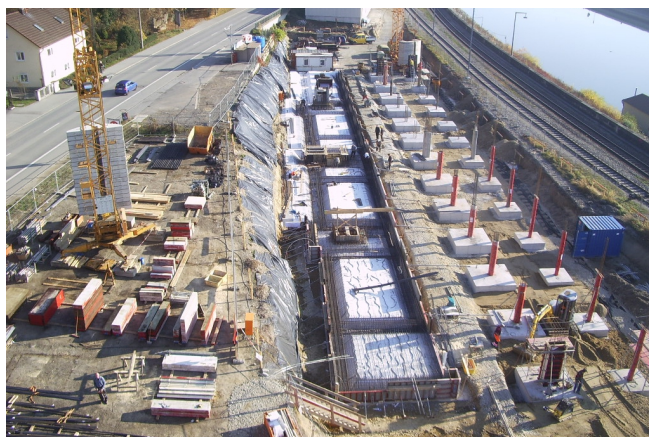
Products used:



Sub-structure waterproofing system Zemseal®



© Mader Bau GmbH



© Mader Bau GmbH



© PNP / Binder