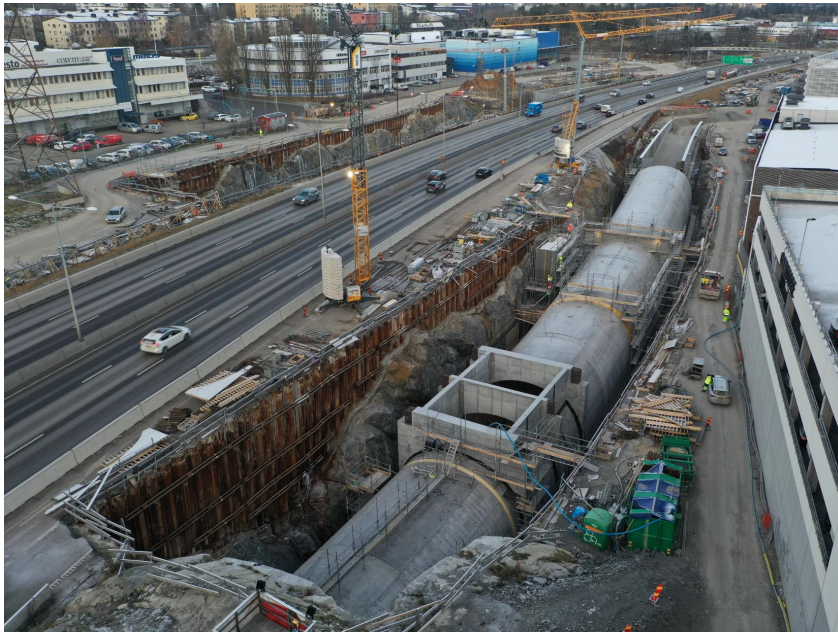


# E4 The Stockholm bypass Project

Stockholm



**Type of building:**

**Clients and Developers:**

Trafikverket

**Building contractor:**

COMSA

**Completion:**

2030

© MAX FRANK AB

**The Swedish Transport Administration is building a new route for the E4 west of Stockholm. E4 The Stockholm bypass is a new route for the European highway (E4) past the Swedish capital.**

The Bypass will simplify everyday life and create opportunities for continued development in a rapidly growing region. Stockholm bypass is one of Sweden's largest and most advanced infrastructure projects of all time.

The new link will connect the southern and northern parts of the Stockholm county, relieve the arterial roads and the inner city of traffic and reduce the vulnerability of the Stockholm traffic system. A new link, west of Stockholm, has been under investigation for several decades and a large number of different alternatives have been studied. To reduce the impact on sensitive natural and cultural environments, just over 18 km of the total of 21 km of the link are located in tunnels.

Spanish COMSA was commissioned to design and build two tunnels of approximately 250 meters each at the E4 in Skärholmen and pedestrian and bicycle lanes supplemented by outdoor lighting.

## **MAX FRANK AB delivers solutions**

For tunnels and troughs, MAX FRANK AB delivers product solutions Stremaform®, Fradiflex®, Synkoflex®, Form-ties, Spacers.

The bypass is expected to be open to traffic in 2030.

# E4 The Stockholm bypass Project

Stockholm

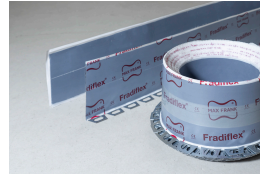
Products used:



Fibre concrete spacers



Stay-in-place formwork for working joints Stremaform®



Fradiflex® Premium metal waterstop



Förfart Stockholm  
© MAX FRANK AB