

Multi-family house with underground car park

Deggendorf



Bodenplatte Mehrfamilienhaus

© www.maxfrank.com

Type of building:

Architect:

kress aumeier architekten partner
mbB

<https://www.kress-aumeier-architekten.de/>

Building contractor:

Jeßberger Bau

<https://www.jessberger-bau.de/>

Distributor:

Bäumler Baubedarf GmbH & Co.KG

<http://www.baeumler-baubedarf.de/index.html>

Completion:

2020

Construction projects with an underground car park require appropriate structural measures to protect the basement, especially in connection with critical groundwater conditions.

Conventional waterproof concrete structures can reach their limits in certain conditions. In areas with high groundwater levels such as the city of Deggendorf, directly at the course of the Danube river, an additional measure for ensuring water impermeability is therefore advisable. Those responsible for the construction chose the sub-structure waterproofing system Zemseal®.

To complement the system, additional MAX FRANK products including bar spacers and distance tubes were installed.

Both the floor slab and the wall surfaces were constructed with the sub-structure waterproofing system Zemseal®. This ensures the sealing of the project against water ingress.

Multi-family house with underground car park

Deggendorf

Products used:



Fibre concrete bar spacers



Distance tubes, cut



Sub-structure waterproofing
system Zemseal®



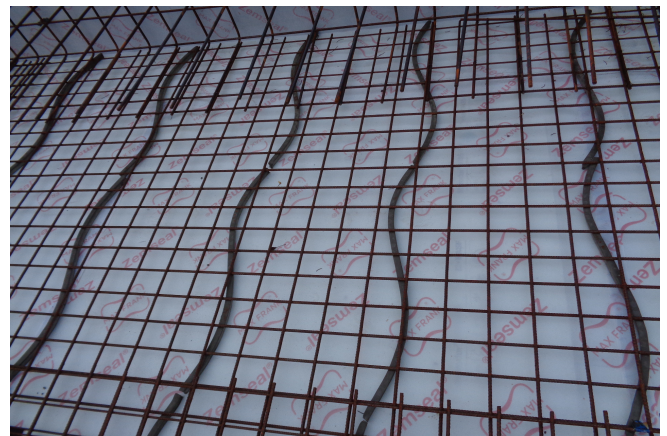
Base plate apartment house
© www.maxfrank.com



Base plate with lift underpass
© www.maxfrank.com



Substructure waterproofing system rolled out
© www.maxfrank.com



Fibre concrete bar spacers - type snake
© www.maxfrank.com

Multi-family house with underground car park

Deggendorf



The joints are secured with tape.
© www.maxfrank.com



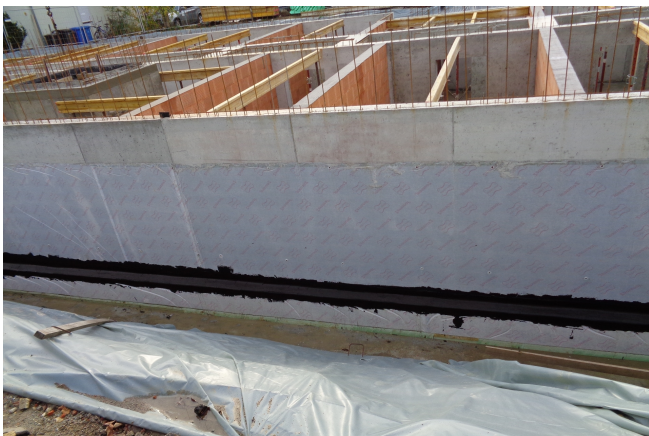
Lower reinforcement layer installed.
© www.maxfrank.com



Finished wall surface with Zemseal®.
© www.maxfrank.com



Finished wall surface with Zemseal®.
© www.maxfrank.com



Slab to wall transition with Zemseal®.
© www.maxfrank.com