

Chief Finance Director

Münster



© Espendiller + Gnegel

Type af bygning:

Administration building

Byggeentreprenør:

Ed. Züblin AG - Gladbeck

www.zueblin.de

Færdiggørelse:

2015

An optimum room acoustics for 500 office workplaces was achieved with Sorp 10®, the sound absorber for thermally activated components.

The starting point for the new building considerations was the PCB load in the old OFD building. After a Europe-wide selection process, five applicants qualified to produce a design. The contract was awarded to the consortium of Patriarche & Co. and Schuster architects, whose design features clear structuring and a functional layout. The building has a comb structure, the office wing area, and a main hallway with staff and meeting rooms. Access to the building and to the 240 parking spaces at the rear of the new building is to the north on the 135-meter long main axis. The reddish clinker façade, typical of Münster, is divided up by exposed concrete strips.

1,500 EgcoBox® cantilever connectors were used in the new building to thermally decouple the ceiling from the load-bearing external facade.

More than 30,000 m Sorp 10® are already installed in the bare ceiling.

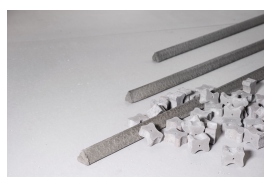
The innovative Sorp 10® product delivers outstanding performance in sound absorption and combines room acoustics and spacer into one function.

Chief Finance Director

Münster



Brugte produkter:



Afstandsholder af fiberbeton



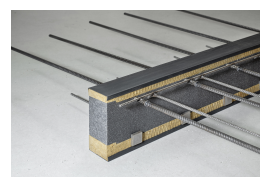
Afstandsrør af fiberbeton



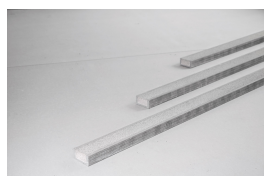
Fibre concrete sealing cones



Stremaform®
endebegrænsning



Egcobox® Isolerende
altanbefæstelse



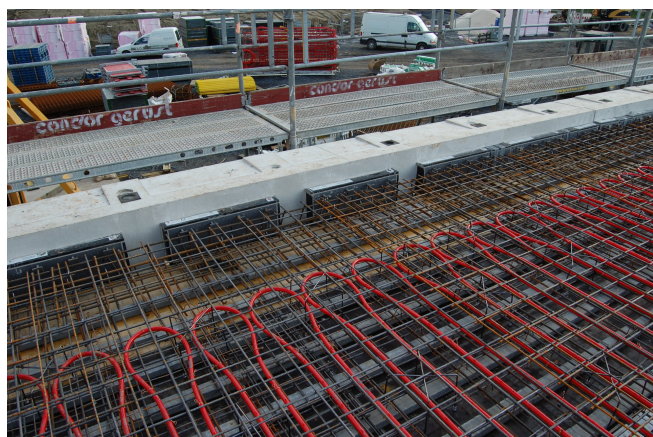
Sorp 10® rumakustik
lydabsorberende



© Ependiller + Gnegel



© Ependiller + Gnegel



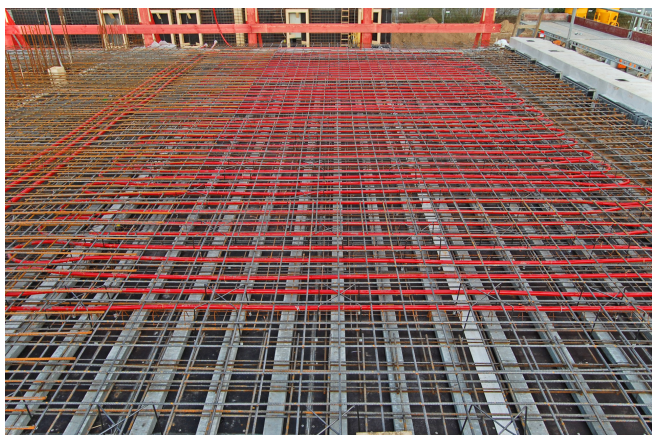
© www.maxfrank.com



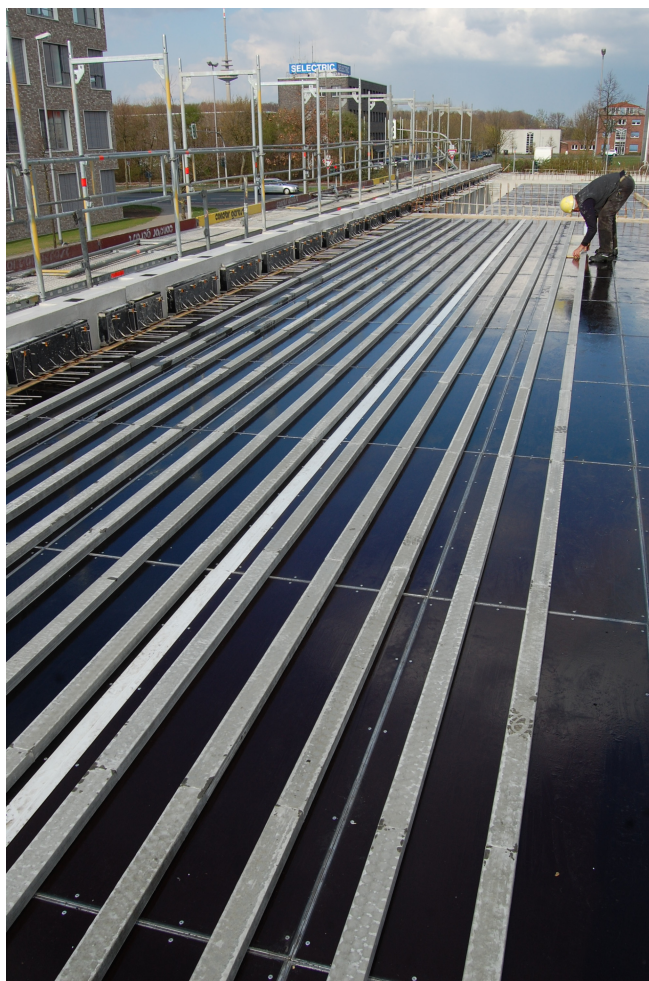
© www.maxfrank.com

Chief Finance Director

Münster



© www.maxfrank.com



© www.maxfrank.com