

Clem Jones Tunnel

Brisbane



Type af bygning:
Tunnel

Færdiggørelse:
2009

© www.maxfrank.com

For the Clem Jones Tunnel project in Australia, MAX FRANK supplied fibre-reinforced concrete spacers as well as the Intec® injection hose system for joint seal.

The CLEM7 project in Australia is one of the country's most important infrastructure projects. It is a continuous 6.8-kilometre multi-lane highway and a 4.8-kilometre tunnel constructed of state-of-the-art precast concrete tunnel segments.

MAX FRANK products have been used for major tunnelling projects worldwide for many years as they meeting the highest performance and quality requirements.

Clem Jones Tunnel

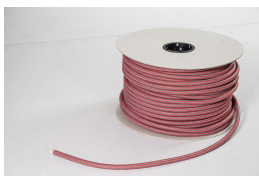
Brisbane



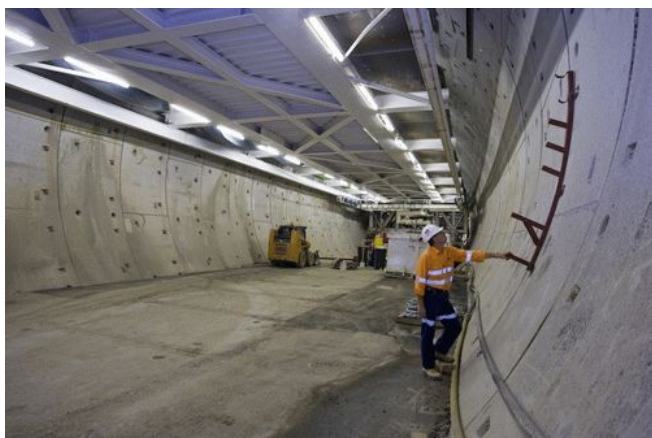
Brugte produkter:



Afstandsholder af fiberbeton



Intec® injektionsslangesystem



© www.maxfrank.com



© www.maxfrank.com