

Residential Building, Reading

Berkshire



© www.maxfrank.com

MAX FRANK supplied Egcbbox® FST steel-to-steel thermal breaks to new residential building.

The Egcbbox® FST connector is an optimal solution for the thermal separation of steel structures. When using conventional construction methods, thermal bridges are created at the transition from the building to the projecting component. This leads to increased energy consumption and runs the risk of condensation and mold formation. Egcbbox® FST reduces thermal bridges, without limiting the structural effectiveness of the support system.

The Egcbbox® FST thermal break units for the steel-to-steel connections were installed between an internal steel structure and an external balcony. MAX FRANK provided bespoke units per connection; designed with a bending moment connection and consisting of a minimum of 2 bolts at the top and 2 bolts at the bottom. Units can also be designed with more bolts and therefore, depending on the geometry, can create a higher moment resistance. Connection for the balcony provides a bending moment capacity so MAX FRANK also designed a thermal break unit to install between two columns and a column connection to separate the basement from the first floor.

The individual Egcbbox® FST units were supplied prefabricated, per connection – which is beneficial compared to a modular system where units require onsite assembly – therefore minimising the risk of incorrect installation onsite. MAX FRANK always supplies the Egcbbox® FST units in stainless steel, as the conductivity value of this material is much lower and creates better thermal results – and doesn't corrode over time.

Type af bygning:

Kunder og udviklere:

Arkitekt:

Ingeniører / Specialplanlæggere:

Industri:

Byggeentreprenør:
Kimcast (Frame Contractor)

Færdiggørelse:
2019

Residential Building, Reading

Berkshire



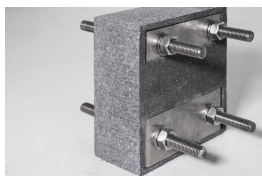
CE marked Egcobox® FST boasts high structural functionality, is corrosion resistant and has versatile application opportunities in new builds or in modernization projects.

Residential Building, Reading

Berkshire



Brugte produkter:



Egcobox® FST stål/stål



Residential building with Egcobox® FST
© www.maxfrank.com



Residential building with Egcobox® FST
© www.maxfrank.com



residential build egcobox fst
© www.maxfrank.com



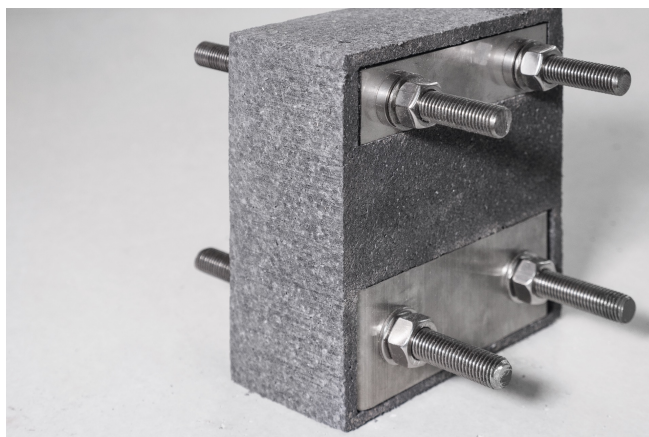
Residential building with Egcobox® FST
© www.maxfrank.com

Residential Building, Reading

Berkshire



residential build egcobox fst
© www.maxfrank.com



Residential building with EgcoBox® FST
© www.maxfrank.com