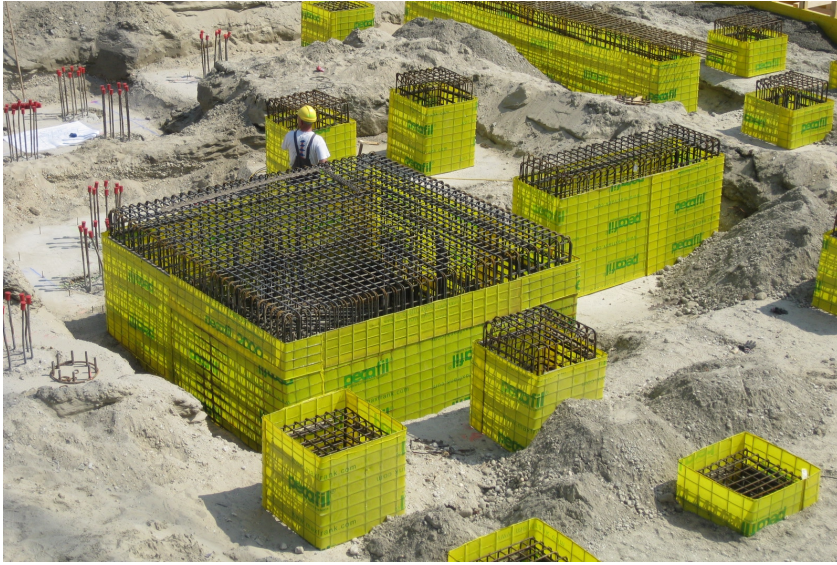


Wien



© www.maxfrank.com

Pecafile® universal formwork elements were used for rapid creation of the foundation formwork for the University of Economics and Business.

On a net usable area of approx. 100,000 m², six building complexes and thus almost a new district of the city is currently being developed between the Prater and the exhibition site. The new campus accommodates 27,000 students. As far as technology and economy permit, the project will be implemented in an environmentally friendly and sustainable manner - the basis of a "green building" concept.

6,000 sqm of Pecafile® VR6 were used as formwork material in the foundations. The low installation time and the environmental friendliness spoke in favour of the proven MAX FRANK product Pecafile®.

Type af bygning:

Distributør:

Grosshädl ESB-Betonstahl, Graz
www.grosshaedl.at

Færdiggørelse:

2012

Wien

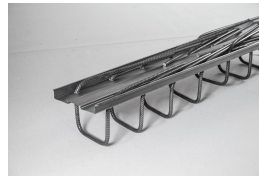
Brugte produkter:



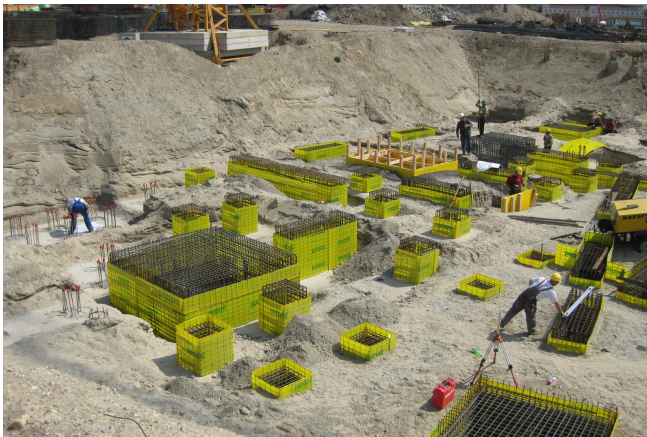
Permanent formwork Pecafil®
- foundation formwork



Stremaform®
endegrænsning



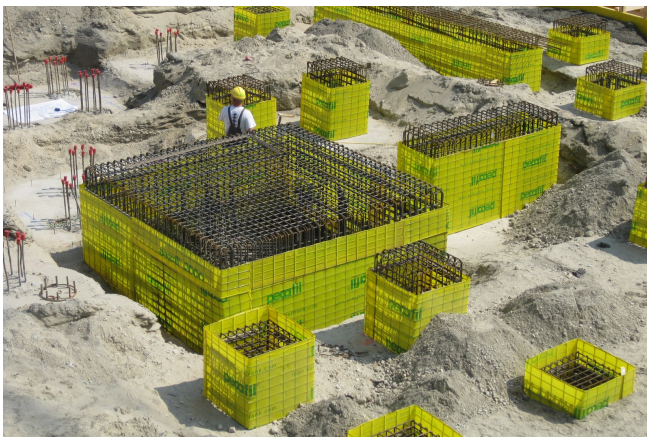
Stabox® armeringstilslutning



© www.maxfrank.com



© www.maxfrank.com



© www.maxfrank.com