

Z-Up residential and commercial building

Stuttgart



© Wolfgang Steidle Fotografie, Stuttgart

The Z-Up residential and office complex in Stuttgart owes its name to its Z-shaped footprint.

The name of this project is derived from the shape and location of the building which sits on a slope and in plan view looks like a "Z".

For the realization of this project the construction management decided to use Egccobox® cantilever connectors from MAX FRANK on the basis of their technical high quality and good price-performance ratio.

Egccobox® P, with 80 mm polystyrene insulation, transmits moments and shear forces that can occur in cantilevered panels such as balconies. Another advantage of the Egccobox® is that the cantilever slab is thermally separated from the structure.

The high level of customer satisfaction is based not only on the quality of the products but also on the technical support and reliable delivery service.

Type af bygning:

Residential- and buisnesshouse

Kunder og udviklere:

HOCHTIEF Projektentwicklung,
Stuttgart

Arkitekt:

Architekturbüro Wolfgang Kergaßner,
Stuttgart

Byggeentreprenør:

Wolfer & Goebel Bau und Projekt
GmbH, Stuttgart

Distributør:

Heinz Lindner, Stuttgart-Fellbach

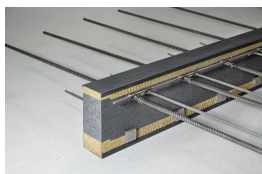
Færdiggørelse:

2009

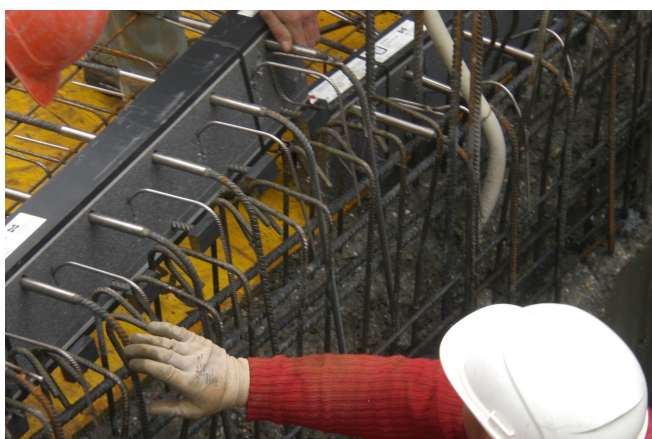
Z-Up residential and commercial building

Stuttgart

Brugte produkter:



Egcobox® Isolerende
altanbefestelse



© Wolfgang Steidle Fotografie, Stuttgart



© Wolfgang Steidle Fotografie, Stuttgart



© Wolfgang Steidle Fotografie, Stuttgart