

Axel Springer new building

Berlin



© www.maxfrank.com

An open terraced landscape forming a "valley" creates an informal stage in the middle of the building for communication within the media complex.

The wide open southwest corner and an open terrace landscape form the centre for creative ideas. In addition to digital departments, up to 3500 workstations will also be available to the editorial staff of WeltN24.

The building is intended to support the company's transition from the analogue to the digital world. A lobby on the ground floor, a so-called "meeting bridge" and a "roof-top bar" will open up the building to the general public. The "meeting bridge" is a viewing platform that not only offers a view of the city but also provides an insight into the work processes of the Springer teams.

A large part of the conceptual design work was dedicated to maintaining the extraordinary spatial and visual quality of the atrium as a natural source of light for the building. A room flooded with daylight creates a sense of well-being, motivation and productivity. Visual and thermal comfort was evaluated using thermal building simulation tools, airflow simulation (CFD) and dynamic daylight analysis.

The spectacular architectural concept by Rem Koolhaas is particularly impressive due to an atrium up to 45 m high, which runs through the entire building and opens up to the existing Axel Springer publishing building. The sound absorber Sorp 10® was used in the concrete core activated ceilings of floors 1 to 4.

The employees in the modern open-space office landscapes and also smaller office zones are provided with both thermal and room-acoustic comfort by the concrete core activated exposed concrete ceilings and the Sorp 10® sound absorber embedded in them. The well coordinated measures in this new building create an ideal working environment for the employees.

Type af bygning:

Kunder og udviklere:

Axel Springer SE, Berlin

Arkitekt:

Rem Koolhaas, OMA (Office for Metropolitan Architecture)

Ingeniører / Specialplanlæggere:

[Transsolar Energietechnik GmbH](http://www.transsolar.de)

Færdiggørelse:

12/2019

Projekt link:

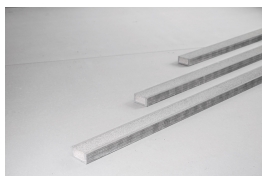
<http://www.axelspringer-neubau.de/die-bauphase/>

Axel Springer new building

Berlin



Brugte produkter:



Sorp 10® rumakustik
lydabsorberende



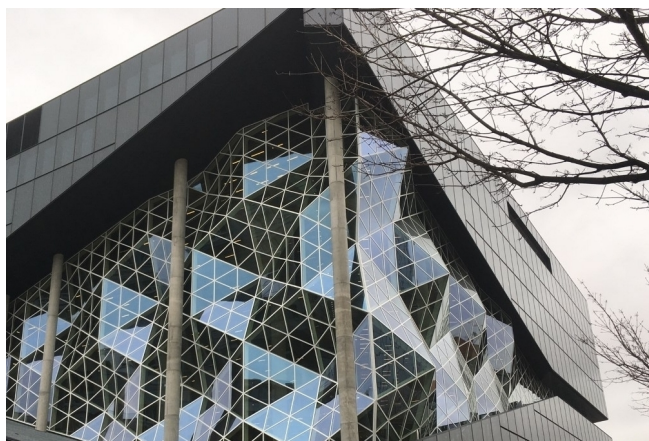
Axel Springer Berlin
© dubcusphoto



Axel Springer Berlin
© dubcusphoto



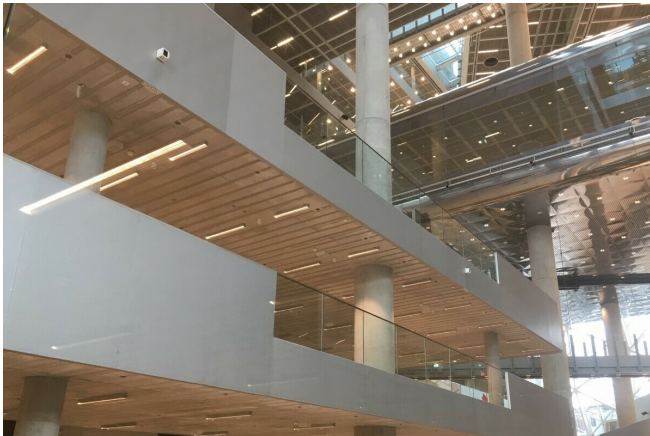
Axel Springer Berlin
© dubcusphoto



Axel Springer Berlin
© www.maxfrank.com

Axel Springer new building

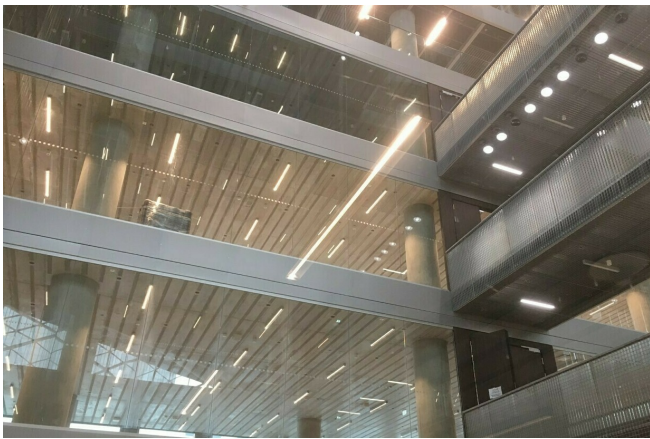
Berlin



Axel Springer Berlin
© www.maxfrank.com



Axel Springer Berlin
© www.maxfrank.com



Axel Springer Berlin
© www.maxfrank.com