

Power station Sohlstufe Lehen

Salzburg, Austria



© www.maxfrank.com

The Sohlstufe Lehen power station won a category of the "European Concrete Award 2014". MAX FRANK supplied formwork elements and fibre-reinforced concrete distance tubes.

The outstanding run-of-river power station in the Salzach River is located in the immediate vicinity of Salzburg's old town and was officially opened in autumn 2013.

This impressive reinforced concrete project with its attractive architecture takes the basic principle of a hydroelectric power station - the balance of forces - and applies it to the water flow.

Essentially, the power station consists of two parts: the powerhouse and four weir fields, which are separated by a 2 cm thick armoured separation joint. The land connections above and below the water are decoupled from the main structure by movement joints. The powerhouse has a foundation area of 1,267 sqm. The four weir fields have a total foundation size of 37.80 m x 76.50 m.

A total of 40,000 cubic meters of concrete and 3,600 tons of reinforcement were installed. For the formwork of working and expansion joints in concrete, a total of 4,150 m² of Stremaform® formwork elements were used. Furthermore, MAX FRANK supplied the project with just under 6,000 distance tubes and sealing cones.

With a capacity of 13.7 megawatts, the power station generates around 81 million kilowatt hours of hydroelectric power per year. That's enough for nearly 23,000 households in the districts of Lehen, Liefering and Itzling.

Type of building:

Hydropower station

Clients and Developers:

Salzburg AG

www.salzburg-ag.at

Architect:

Max Rieder, Wien

www.maxrieder.at

Erich Wagner, Salzburg

www.architektur-wagner.com

Building contractor:

Arbeitsgemeinschaft:

Arge Kraftwerk Lehen bestehend aus den Firmen:

G. Hinteregger & Söhne

www.hinteregger.co.at

Porr Bau GmbH www.porr-ag.de

Teerag Asdag AG www.teerag-asdag.at

Lieferant Bewehrungsstahl:

Stahlform Baustahlbearbeitung GmbH, Oberndorf

www.stahlform.com

Verlegung Bewehrungsstahl:

Bewehrungstechnik GmbH, Salzburg

Completion:

2013

Power station Sohlstufe Lehen

Salzburg, Austria



Products used:



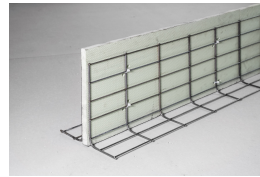
Fibre concrete distance tubes



Fibre concrete sealing cones



Stay-in-place formwork for working joints Stremaform®



Stay-in-place formwork for expansion joints Stremaform®



© www.maxfrank.com



© www.maxfrank.com



© www.maxfrank.com



© www.maxfrank.com