

# Roche administration building

Rotkreuz, Switzerland



**Type of building:**  
Office building

**Clients and Developers:**  
Roche Diagnostics AG, Rotkreuz,  
Schweiz  
Bauherrenvertretung:  
projektrosenberg, Zürich

**Architect:**  
Burckhardt+Partner AG, Basel

**Completion:**  
2011

© Burckhardt+Partner AG, Basel

## **Sorp 10® enables reduction of reverberation times with minimum influence on thermal component activation.**

Architecture with character: The 68 m high administration building of Roche Diagnostics AG Switzerland is supported vertically by a four-storey rhomboid structure made up of A and V columns. The high-rise building has no suspended ceilings. Instead, core-activated component systems are used.

Perfect boundary conditions for the premiere of the product Sorp 10® by MAX FRANK: With thermal activation, the concrete ceilings are also acoustically activated during the shell construction phase.

In the Roche Diagnostics AG high-rise building, thirteen floors each with approx. 1,500 running meters of acoustic strip, a total of around 20,000 running meters. Sorp 10® are embedded in the concrete ceiling with distance between centres of 270 mm. Acoustic resistance, from absorber strip to reverberating concrete, varies greatly and this leads to considerable variation of absorption.

In addition to the absorber strip the following types of Stremaform® formwork element were supplied: Stremaform® flat material with fibre-reinforced concrete rail on one side and Stremaform® Strong with rubber water bar cage.

# Roche administration building

Rotkreuz, Switzerland



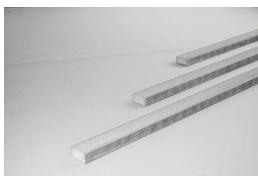
## Products used:



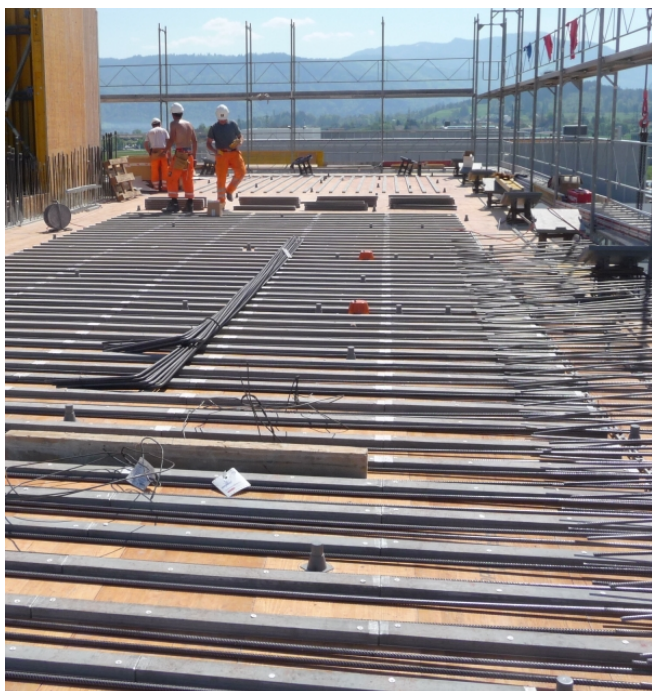
Stay-in-place formwork for working joints Stremaform®



Stay-in-place formwork for working joints Stremaform® with rubber water bar cage



Room-acoustic sound absorber Sorp 10®



© Burckhardt+Partner AG, Basel



© Burckhardt+Partner AG, Basel



© Burckhardt+Partner AG, Basel



© Burckhardt+Partner AG, Basel



# Roche administration building

Rotkreuz, Switzerland



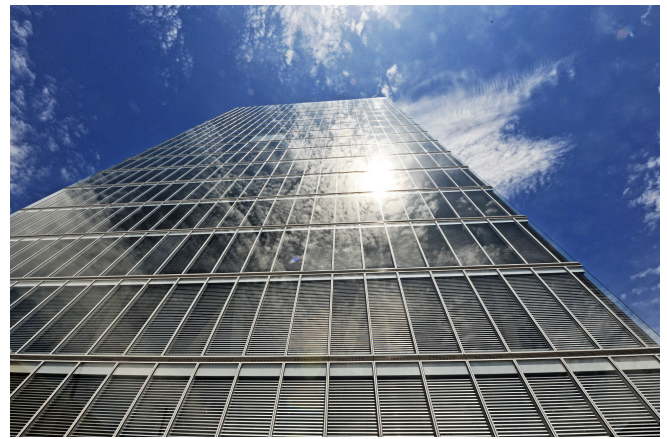
© Burckhardt+Partner AG, Basel



© Burckhardt+Partner AG, Basel



© Burckhardt+Partner AG, Basel



© Burckhardt+Partner AG, Basel