

Brampton

Cambridgeshire, PE28 4ZA, United Kingdom



Computeranimation des Whitworth Typs
© Crest Nicholson

Type of building:
Residential building

Clients and Developers:
Crest Nicholson (Eastern) Ltd

Building contractor:
AD Bly

Completion:
2018

Developer Crest Nicholson announced the launch of Mandeville Place, a collection of apartments and family homes in Brampton, Cambridgeshire.

The new development brings 56 much-needed one and two bedroom apartments as well as two, three and four bedroom homes to the area.

Mandeville Place forms part of the wider redevelopment of RAF Brampton after the military base was closed in 2013. Once complete, the development will offer a range of amenities useful for residents and the wider community including allotments, play areas and sports pitches.

Homes at Mandeville Place are traditional in style replicating the design of Georgian townhouses to reflect the architecture of the surrounding area. The site itself has a rich history and was formerly owned by Lord Mandeville during the First World War.

[Pecafil®](#) was chosen for the Brampton site after excellent results of its use at another large housing development. They found Pecafil® to be quick to install, easy to use and the product has provided a significant cost saving. The rigidity of Pecafil® means less deflection when loaded by concrete and soil backfill, leading to more accurate beams and no concrete wasted where bowing would otherwise occur.

[Pecavoid®](#) has also been successfully used under the beams as part of the system providing cost savings and MAX FRANK concrete spacers have been used within the development.

Pecavoid®, and its associated ground heave products, can be supplied in a number of grades and depths – all designed to provide full foundation protection, in any type of expanding soil situation,

Brampton

Cambridgeshire, PE28 4ZA, United Kingdom



during the complete life span of the building.

“When we used Pecafil® at Brampton, we found the cubic metres of concrete needed was spot on compared to the calculations. Even if the concrete savings were only 1 cubic metre per plot x 60 plots that is 60 cubic metres of saved concrete. Costs vary per cubic metre but can be around £100, so a saving of £6,000 is easily achieved. The more flexible product always resulted in splits in the formwork from the weight of concrete in a pour and bottom ends would flap out. Pecafil didn't do this once. As an example, for a double garage it would take 5-10 minutes using Pecafil® to fit but with a more flexible system it would mean a man lost for a couple of hours. It's much quicker to use and much easier. I would certainly use it again.”

Danny Johnson, AD Bly Construction

Brampton

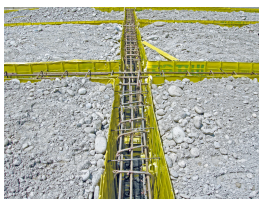
Cambridgeshire, PE28 4ZA, United Kingdom



Products used:



Permanent formwork Pecafile®



Permanent formwork Pecafile®
- foundation formwork



Ground heave solution
Pecavoid®



Computer generated image of The Whitworth house type
© Crest Nicholson



Permanent formwork Pecafile® and ground heave solution
Pecavoid®
© www.maxfrank.com



Permanent formwork Pecafile®
© www.maxfrank.com



Permanent formwork Pecafile®
© www.maxfrank.com

Brampton

Cambridgeshire, PE28 4ZA, United Kingdom



Permanent formwork Pecafil® and ground heave solution
Pecavoid®
© www.maxfrank.com



Fibre concrete spacers
© www.maxfrank.com



Ground heave solution Pecavoid®
© www.maxfrank.com