

# Lehrter main railway station

Berlin, Germany



© Ansgar Koreng / CC BY 3.0 (DE), Berlin Hauptbahnhof Ostseite HDR, CC BY 3.0 DE

## **The Stremaform® formwork element was installed in the working joints for Lehrter Station in Berlin.**

The main railway station in Berlin is the German capital's most important passenger station. With around 300,000 travellers every day, the station is the fourth busiest Deutsche Bahn AG station after Hamburg, Munich and Frankfurt am Main.

The official name of Berlin's station was the subject of protracted discussions. At its opening in May 2006 the double name "Berlin Hauptbahnhof – Lehrter Bahnhof" was dispensed with and only "Berlin Hauptbahnhof" was communicated. However, the main railway station as a whole is still sometimes referred to colloquially as "Lehrter Bahnhof" and the DB station signs still carry the suffix "Lehrter Bahnhof".

The Stremaform® formwork element was installed in the working joints of the reinforced concrete components. Stremaform® is an expanded mesh embedded on both sides in reinforcing steel, which is delivered to the building site as a precisely fitting built-in component.

The advantage of this element is that it remains in the joint. No laborious stripping is necessary between the reinforcing steels because the installation of the reinforcements can continue without interruption. This results in an enormous gain in time.

The Stremaform® formwork element is mainly used in engineering structures such as power stations, sluices and numerous railway structures, for example the new Munich-Nuremberg and Frankfurt-Cologne lines, the City Tunnel in Leipzig, the railway station at Berlin BBI Airport and underground stations in Amsterdam - to name just a few reference objects.

**Type of building:**  
Railway station

**Completion:**  
2006

**Project link:**  
[http://www.bahnhof.de/bahnhof-de/Berlin\\_Hauptbahnhof.html](http://www.bahnhof.de/bahnhof-de/Berlin_Hauptbahnhof.html)

# Lehrter main railway station

Berlin, Germany



## Products used:

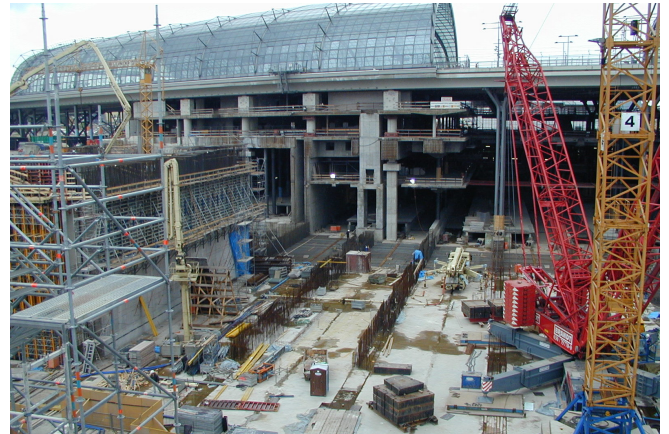


Stay-in-place formwork for working joints Stremaform®



Lehrter Station

© Ansgar Koreng / CC BY 3.0 (DE), Berlin Hauptbahnhof Ostseite  
HDR, CC BY 3.0 DE



© www.maxfrank.com



© www.maxfrank.com



© User:Angr, BlnHauptbahnhof26, Public Domain