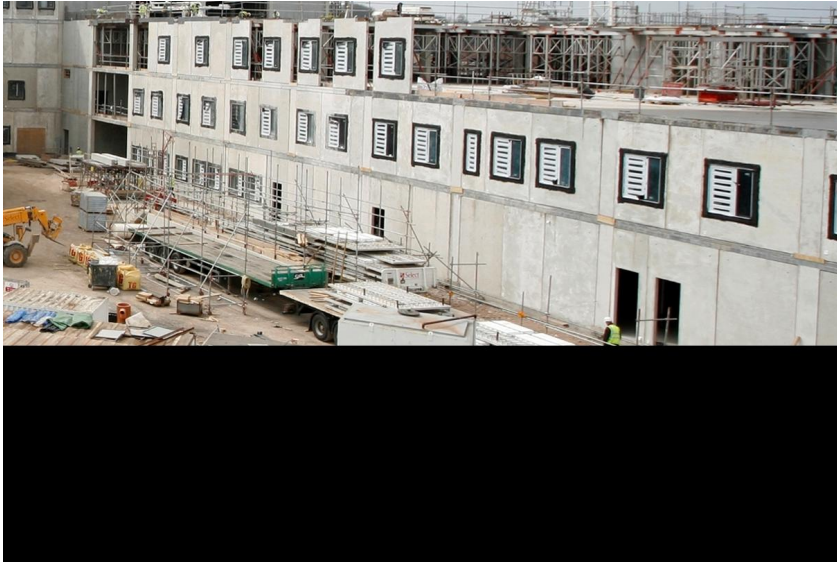


University Hospital of North Staffordshire

Stoke-on-Trent, Staffordshire, United Kingdom



Type of building:
Hospital

Building contractor:
Laing O'Rourke / Expanded Structures

Completion:
2012

© www.maxfrank.com

MAX FRANK supplied Shearail® punching shear reinforcement system, which was adapted for use in semi-automated pre-cast production processes.

Shearail® is a prefabricated system alternative to individual shear links and is supplied in the form of rails carrying double-headed studs of variable diameter, length and spacing in accordance with BS8110. The most common application is on reinforced concrete flat slabs, but it is also employed in piled slabs, post-tensioned slabs, shear walls and other shear applications.

MAX FRANK's technical design team re-engineered its [Shearail® punching shear reinforcement](#) system for use within the context of the manufacturing process, without compromising its structural integrity. MAX FRANK's design engineers adapted the existing Shearail® design to allow for quick, semi-automated assembly while keeping the stud heads in the compression zone.

University Hospital of North Staffordshire

Stoke-on-Trent, Staffordshire, United Kingdom

Products used:



Punching shear reinforcement
Shearail®



© www.maxfrank.com



© www.maxfrank.com