

Business Garden Bucharest

Bukarest



Business Garden Bukarest

© Vastint Romania S.R.L., www.vastint.eu

The "Business Garden Bucharest" office and commercial premises are situated in a central location in the capital city, surrounded by spacious gardens.

The gross rental floor area of the three buildings totals 43,000 square metres. The project was awarded the highest pre-certification rating LEED Platinum in 2016.

MAX FRANK supplied Stremaform® formwork elements for expansion joints in the construction project. The Egcodorn® shear force dowels (type WN and WQ) are integrated in the Stremaform® formwork element. Thanks to their anchor bodies, shear force dowels are able to transmit very high loads, even with minimal component thicknesses. The shear force dowels are integrated into the formwork elements in the factory, thus minimising the assembly time at the building site.

In addition, the Stremaform® formwork element was used for working joints. The expanded metal in the Stremaform® enables the seepage of concrete slurry, so that a rough surface forms towards the second concreting section.

Type bygning:

Office- and buisnesshouse

Kunder og utviklere:

Vastint Romania S. R. L.

www.vastint.eu

Arkitekt:

West Group Architecture

www.westgroup.tts.ro

Byggentrepreneur:

PORR Construct

www.porr.ro

Fullføring:

2018

Business Garden Bucharest

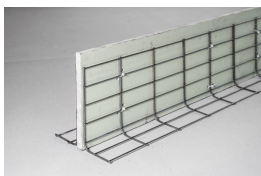
Bukarest



Produkter som brukes:



Stremaform® forskaling for arbeidsfuger som holdes på plass



Stremaform® forskaling for ekspansjonsfuger som holdes på plass



Egcodorn® skjærkraftdybel



View of the three buildings
© Vastint Romania S.R.L.



Stremaform® formwork elements for working joints
© www.maxfrank.com



Business Garden Bucharest
© Vastint Romania S.R.L., www.vastint.eu



Garden
© Vastint Romania S.R.L.

Business Garden Bucharest

Bukarest



Formwork element with integrated shear force dowels
© www.maxfrank.com