

KORZO shopping centre filling station

Bratislava



© www.maxfrank.com

At a filling station in Bratislava Tubbox® column formers, type "spiral" were used for the formwork of the concrete circular columns.

The formwork for the two concrete round support columns was made using Tubbox® column formers, type "spiral". The shaping formwork Fratec® from MAX FRANK solved the problem of the transition from the column to the roof.

Fratec® special formwork can also be used to easily achieve the individual shapes of the capitals:

- Freedom of design without having to take formwork-related issues into account
- Delivery of ready-assembled elements to the building site
- Light in weight – no need for the use of a crane for moulding and de-moulding work
- No need for release agents

Type bygning:

Gas station

Kunder og udviklere:

Petrolex s. r. o., Ing. Peter Vanco

Byggentrepreneur:

LR trend s. r. o., Bratislava

www.lrtrend.sk

Fullføring:

2016

KORZO shopping centre filling station

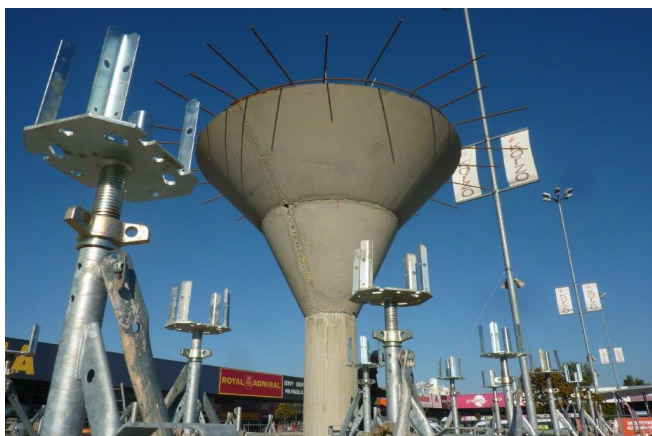
Bratislava



Produkter som brukes:



Tubbox® søyleformer



© www.maxfrank.com



© www.maxfrank.com



© www.maxfrank.com