

Metro Budowa

Warschau



Metro Warschau
© Karakaksa89, via Wikimedia Commons

During the extension of the metro line 2 in Warsaw, a strong ground slab had to be sealed. This lies at a depth of 15 metres below the ground level and about 12 metres below the upper edge of the groundwater table.

In autumn 2019, the 3.1 km extension of the Warsaw Metro Line M2 was opened. This is the first extension of this line, which was inaugurated in 2015. It starts at the previous terminus Dworzec Wileński and runs completely underground. In the western section behind station C06 Ksiecja Janusza to the stopping tracks of station C04, the sub-structure waterproofing system Zemseal® was used in combination with other waterproofing products.

The realisation of the sealing measures was extraordinarily demanding.

The shaft chamber for the dismantling of the tunnel boring machine of the new section, with a foundation slab up to 2 metres thick, had to be sealed against groundwater.

The Zemseal® 12 waterproofing membrane permanently protects the base slab against water penetration.

A major challenge was the sealing of the connection between the base slab and the barette wall, as well as the barette wall tiebacks. In the transition areas, Zemseal® PA was used as a supplement to Zemseal® sub-structure membrane.

Cresco® GR expanding waterstop was installed as a construction joint sealant in these areas. As secondary joint sealing, two injection hoses Intec® Premium, which is suitable for multiple grouting, were installed in the floor slab-wall construction joints and injected with PUR resin Intectin® Plus.

Despite the additional stress caused by rainwater during the construction phase and extremely unfavourable installation

Type bygning:

Kunder og udviklere:

METRO WARSZAWSKIE Sp. z o.o.
www.metro.waw.pl

Arkitekt:

AMC – Andrzej M. Chołdzyński Sp. z o.o.
www.amcholdzynski.pl

Ingeniører/spesialistplanleggere:

ILF CONSULTING ENGINEERS POLSKA Sp. z o.o.
ILF Polska ILF Transportation projects

Byggentreprenør:

Gulermak Agir Sanayi Insaat Taahhut A.S. S.A. Oddział w Polsce
Ul. Grzybowska 80/82, 00-844
Warszawa, Polska
Sub-Contractor:
SERW Sp. z o.o. Marszałkowska 111,
00-102 Warszawa [Project](#)

Fullføring:

10/2020

Prosjektlink:

<https://www.metro.waw.pl/linia-m2>

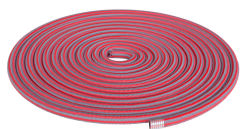
Metro Budowa

Warschau

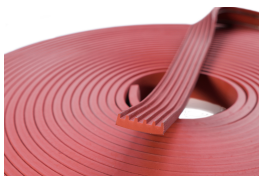


conditions, the MAX FRANK waterproofing products have proven themselves outstandingly.

Produkter som brukes:



Intec® Premium
injeksjonsslagesystem



Cresco® GR ekspanderende
fugebånd



Zemseal®
vanntettingssystem for
understruktur



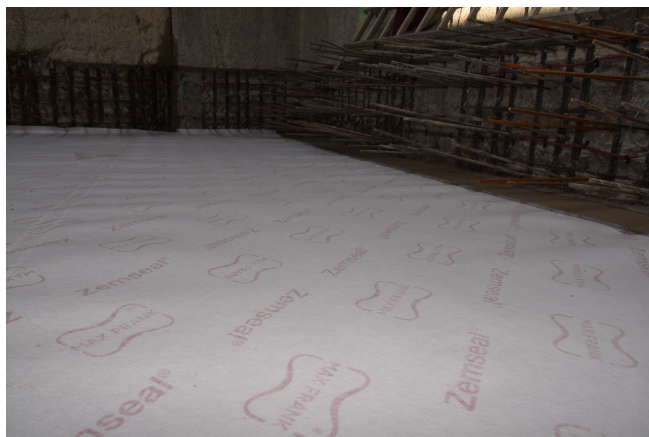
Metro Warsaw
© Karakaksa89, via Wikimedia Commons



Waterproofing system Zemseal® in combination with Intec®
injection hose system
© www.maxfrank.com



Work on barett wall
© www.maxfrank.com



Wrinkle-free layer of Zemseal® sub-structure waterproofing
membrane
© www.maxfrank.com

Metro Budowa

Warschau



Simple butt joint formation of Zemseal® membranes
© www.maxfrank.com



Shaft chamber with laid Zemseal® waterproofing membrane
© www.maxfrank.com



Access to the M2 metro line shaft chamber
© www.maxfrank.com



Start of reinforcement laying on surface spacers
© www.maxfrank.com



Laying the lower reinforcement layer
© www.maxfrank.com



Zemseal® material very robust in construction site use - massive reinforcement work possible on the track
© www.maxfrank.com

Metro Budowa

Warschau



Fibre concrete bar spacer between sub-structure membrane and reinforcement

© www.maxfrank.com



Sealing of the highly reinforced connection area with two grouting circuits of Intec® Premium injection hose

© www.maxfrank.com



Metro station Księcia Janusza

© Adrian Grycuk, CC BY-SA 3.0 PL, via Wikimedia Commons